

SOUNDPLY®

3x  
MORE  
ABSORPTIVE

12x  
MORE  
STABLE

1/3  
THE TOTAL  
WEIGHT

...than other acoustic ceiling panels.

ALTA™

## ACOUSTIC CEILING PANELS



### KEY FEATURES

**The Industry's Most Sound Absorbing (NRC) & Sound Blocking (CAC) Acoustic Ceiling Panels** — measurably outperforming any other sound absorptive ceiling panel.

**MicroPerfection® Technology** — a pioneering method of sound absorption that **increases** effectiveness as noise levels rise.

**Patented SP Core Technology™** — resulting in panels that are **Remarkably Stronger, More Stable, and Weigh Significantly Less** than any other wood acoustic panels.

**Easy & Versatile Installation** — Alta Ceiling Panels can be mounted directly to a ceiling, attached to a grid, or used as drop-in panels.

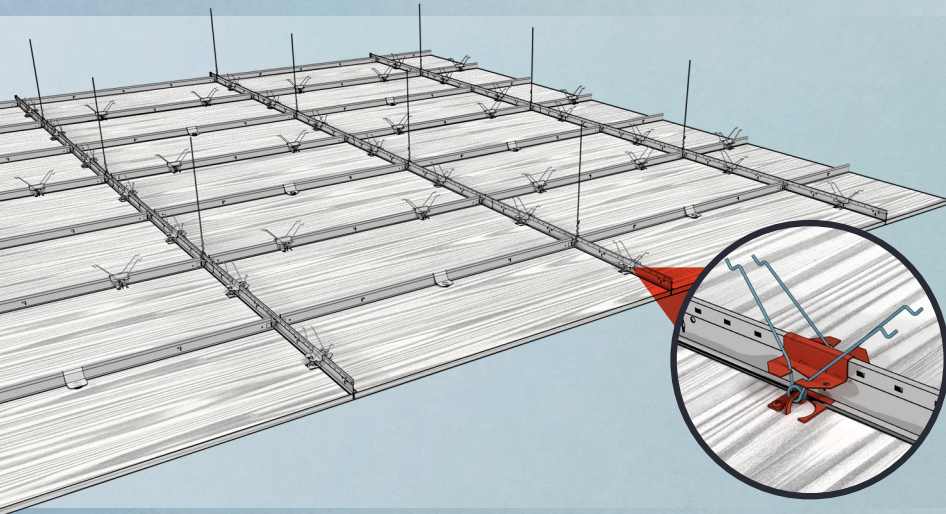
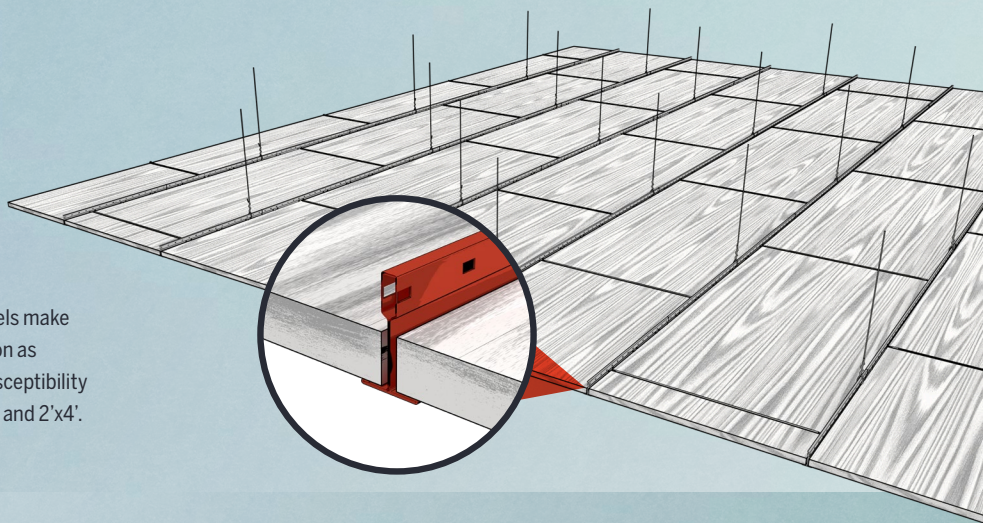
**Guaranteed Performance** — Alta Ceiling Panels are the **first and only** ceiling panels with an acoustic performance guarantee.

Finished surfaces include **Real Wood Veneers**, (in hundreds of species/slice/grade options), **Specialty Finishes**, the **Full Spectrum of Paint Colors**, and even **Hi-Res UV Printing**.

## INSTALLATION OPTIONS

### Suspended Grid Drop In

The unique strength and stability of Alta Acoustic Panels make them the first micro-perforated wood panels to function as drop-in panels in standard ceiling grids without the susceptibility to sagging and warping. Recommended sizes are 2'x2' and 2'x4'.



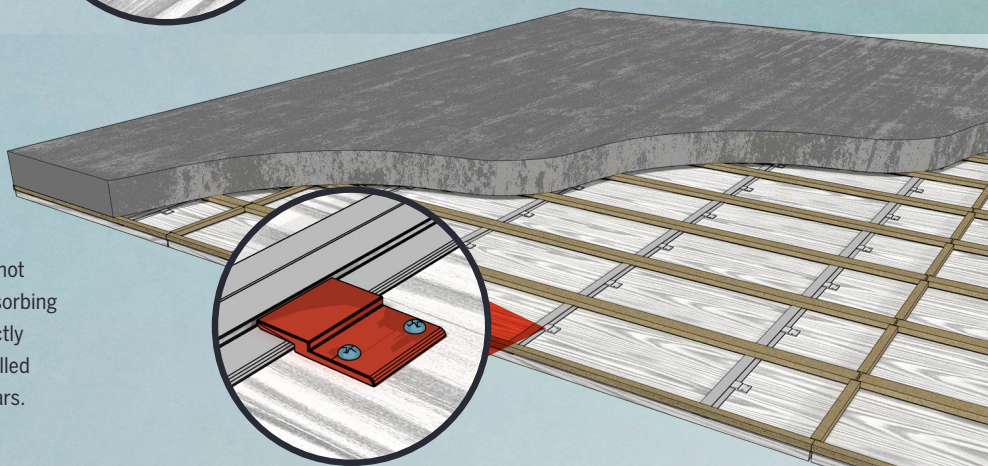
### Suspended Grid with Torsion Springs

Torsion springs are ideal for applications requiring an accessible plenum space, while allowing reveals between panels as tight as 1/8". Panel sizes are available up to 5'x10'.

*Panels 3' and wider may require magnetic saddle clips.*

### Direct Mount with Z-Clip

Since Alta Acoustic Panels are the only ceiling panels not requiring a large plenum space or a layer of sound-absorbing insulation for acoustic performance, they can be directly mounted to the ceiling. Sizes up to 5'x10' can be installed using panel-mounted z-clips and ceiling-mounted z-bars.



Wood grain is shown to indicate grain direction on the visible (opposite) side of the panels. Although available, panels do not come standard with wood veneer on their backside.

## PLANK SPACING



## ACOUSTIC MATERIAL OPTIONS

Alta Ceiling Panels owe their exceptional acoustic and structural properties to the cutting-edge technology of their patented SoundPly panel construction. Alta Panels are available in the SoundPly LR and RF Series and feature a resonant core with MicroPerfection® technology on the exposed face.



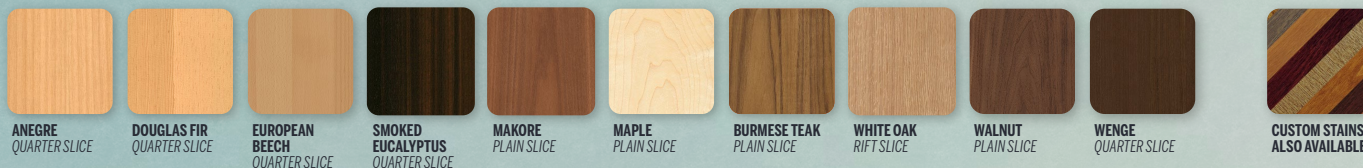
ITEM	DESCRIPTION	AVAILABLE WIDTHS	AVAILABLE LENGTHS	NRC	CAC	FIRE CLASS
CP-LRM19	¾" Thick Acoustic Ceiling Panel	up to 60"	up to 120"	.70	n/a	A
CP-LRM25	1" Thick Acoustic Ceiling Panel	up to 60"	up to 120"	.80	39	A
CP-LRM38	1½" Thick Acoustic Ceiling Panel	up to 60"	up to 120"	.85	39+	A
CP-LRM51	2" Thick Acoustic Ceiling Panel	up to 60"	up to 120"	.95	39+	A
CP-RFM19	¾" Thick Acoustic Ceiling Panel	up to 60"	up to 120"	.70	43	A
CP-RFM25	1" Thick Acoustic Ceiling Panel	up to 60"	up to 120"	.90	46	A
CP-RFM38	1½" Thick Acoustic Ceiling Panel	up to 60"	up to 120"	.95	46+	A
CP-RFM51	2" Thick Acoustic Ceiling Panel	up to 60"	up to 120"	1.00	46+	A



Custom panel widths and lengths available

## VISUAL OPTIONS

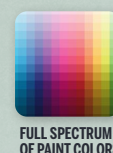
**Wood Species** (a small sampling of the 715+ genuine wood species/slice/grade combinations in stock)



**Specialty Finishes**



**Additional Finishes**



With over 4 million sq. ft. of veneer in inventory, SoundPly Alta Ceiling Panels are available in the most comprehensive collection of real woods within the industry. All inventoried species are graded utilizing Navy Island's patented TruGrade® Wood Grading Standards. To view graded examples of veneer demonstrating the variations in grain, texture, and color inherent to wood, visit [trugrade.navyisland.com](http://trugrade.navyisland.com).





# The First Ceiling Panels with **Guaranteed** Acoustic Performance.

Alta Ceiling Panels are fabricated from SoundPly Acoustic Panels — the first and only acoustic panels with a guarantee that their installed, real-world acoustic performance will match or exceed their ASTM laboratory-tested performance.

### Why is this guarantee so significant?

It brings to light an unfortunate secret of the acoustic industry. Due to a variety of reasons, **over 96% of all installed acoustic products provide measurably less performance than their claimed, laboratory-tested performance.**

*Talk to a team member to learn more about SoundPly's acoustic guarantee.*

## PHYSICAL DATA

### Material

Alta Acoustic Ceiling Panels consist of a fully sealed, sound insulated, resonant cavity overlaid with a 2mm thick micro-perforated multi-ply surface.

### Face Options

- 700+ Custom Wood Species/Slice/Grade combos
- Custom Paint Colors in a variety of sheens

### Finish Options

- Color Match Stains for Wood Veneers
- Clear or Tinted Catalyzed Lacquer
- Clear or Tinted **ULTI-MATTE™** Flat Varnish

### Weight

CP-LRM19 / CP-RFM19	1.4 lbs/ft <sup>2</sup>
CP-LRM25 / CP-RFM25	1.8 lbs/ft <sup>2</sup>
CP-LRM38 / CP-RFM38	2.2 lbs/ft <sup>2</sup>
CP-LRM51 / CP-RFM51	2.6 lbs/ft <sup>2</sup>

### Accessories

Installation hardware to be ordered separately.

### Fire Performance

Alta Ceiling Panels contain either a non-combustible rockwool or fiberglass core. A thin (less than .025 inches) layer of veneer, paint, or film finish is applied. Alta Ceiling Panels can be used in Class A environments (IBC Chapter 8 Section 803).

## LEED® CREDITS

### LR RF MRc4 Recycled Content

LR Series - 21% Pre-Consumer  
RF Series - 30% Post-Consumer

### LR RF BDCv4 EQ Acoustic Performance

### LR RF EQ4.4 Low-Emitting Materials

### LR RF Material Ingredient Disclosure - Option 1

Discover the entire line of SoundPly acoustic solutions...



**SOUNDPLY®**  
developed and manufactured by  
**NAVY ISLAND**

275 Marie Ave. East  
St. Paul, MN 55118  
tel. (651) 451-4454  
sales@navyisland.com  
www.soundply.com

LEED® is a registered trademark of the US Green Building Council. SOUNDPLY®, ALTA™, MICROPERFECTION®, DSC™, TRUGRADE®, LR Series™, RF Series™, ULTI-MATTE™, and all associated logos are trademarks of Navy Island, Inc.

The information in this document is subject to change without notice.  
Navy Island assumes no responsibility for any errors that may inadvertently appear within this document.

ALTA.DS-2005E1  
© 2019 Navy Island, Inc. Printed in U.S.A.  
<https://soundply.com/docs/Alta-Acoustic-Ceiling-Panels-DS-1912e1.pdf>