

SOUNDPLY®

4x
MORE
ABSORPTIVE

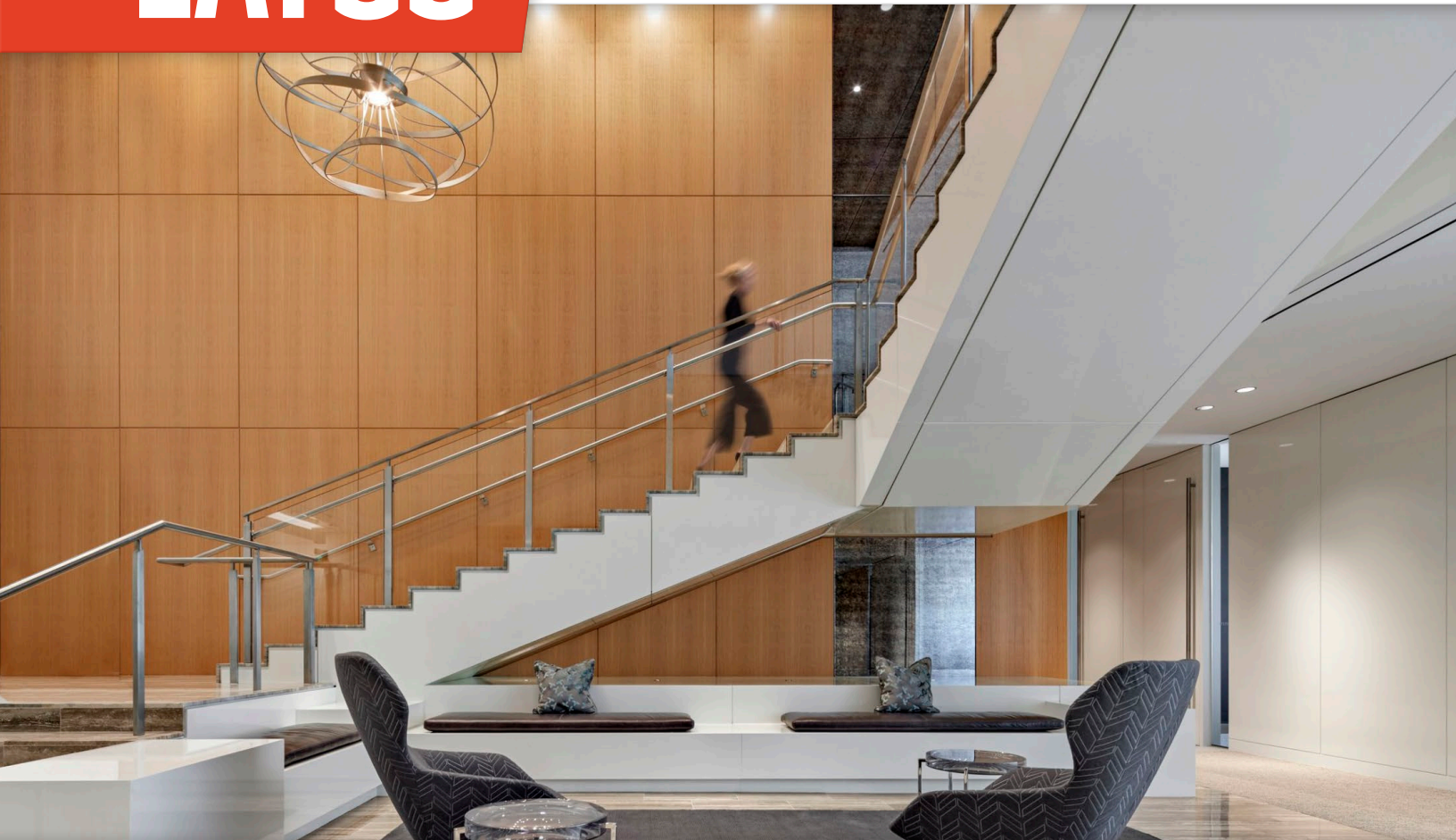
12x
MORE
STABLE

1/6
THE TOTAL
WEIGHT

...versus other acoustic wall panels.

LATUS™

ACOUSTIC WALL PANELS



KEY FEATURES

The Industry's Highest Performing Acoustic Wall Panels — providing significantly better sound absorption (NRC) & sound blocking (STC) than any other sound absorptive wall panels.

MicroPerfection® Technology — a pioneering method of sound absorption that *increases* effectiveness as noise levels rise.

Patented SP Core Technology™ — resulting in panels that are *Remarkably Stronger, More Stable, and Weigh Significantly Less* than traditional wood wall panels.

Easy & Versatile Installation — Unlike other sound absorptive wall panels, Latus panels mount directly to the wall, without requiring a cavity space or backloading with sound absorbing insulation.

Guaranteed Performance — Latus Wall Panels are the *first and only* acoustic panels to carry an acoustic performance guarantee.

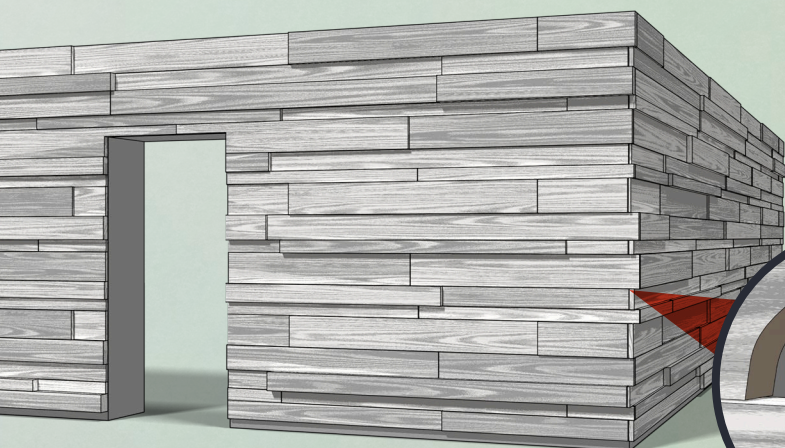
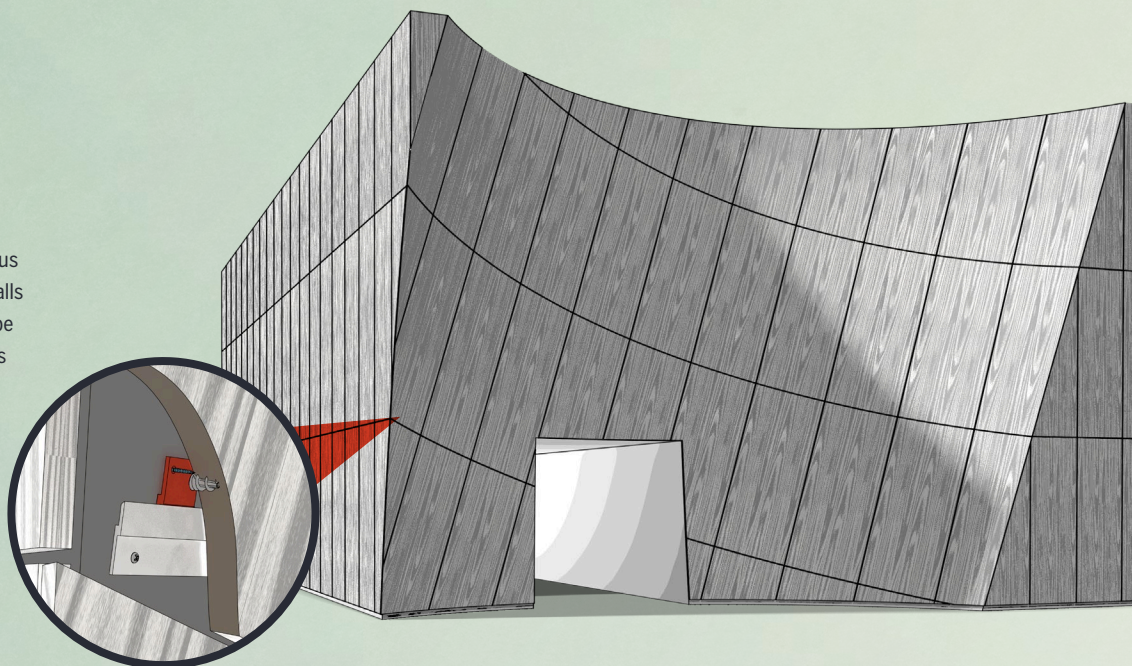
Finished surfaces include **Real Wood Veneers**, (in hundreds of species/slice/grade options), **Specialty Finishes**, the **Full Spectrum of Paint Colors**, and even **Hi-Res UV Printing**.

developed and manufactured by **NAVY ISLAND**

INSTALLATION OPTIONS

Direct Mount with Z-Clip

Similar to traditional wall panels, Latus panels can be directly mounted to walls using Z-clips. Sizes up to 5'x12' can be installed using panel-mounted z-clips and wall-mounted z-bars.



Direct Mount with Bayonet Clip

For horizontal applications, Latus panels can be attached to a wall using Bayonet Clips. Mounting to either vertical 15/16" hat channel, or directly into drywall, Bayonet Clips install easily and securely, while leaving a minimal reveal less than 1/8".



ACOUSTIC MATERIAL OPTIONS

Latus Wall Panels owe their exceptional acoustic and structural properties to the cutting-edge technology of their patented SoundPly panel construction. Latus Panels are available in the SoundPly LR and RF Series and feature a resonant core with MicroPerfection® technology on the exposed face.



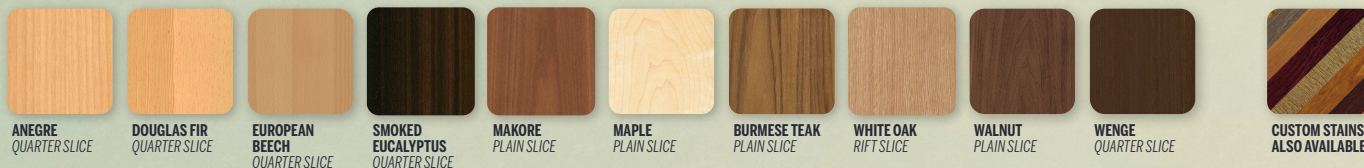
| ITEM | DESCRIPTION | AVAILABLE WIDTHS | AVAILABLE LENGTHS | NRC | STC | FIRE CLASS |
|----------|-------------------------------|------------------|-------------------|------|-----|------------|
| WP-LRM19 | ¾" Thick Acoustic Wall Panel | up to 60" | up to 120" 144" * | .70 | n/a | A |
| WP-LRM25 | 1" Thick Acoustic Wall Panel | up to 60" | up to 120" 144" * | .80 | 39 | A |
| WP-LRM38 | 1½" Thick Acoustic Wall Panel | up to 60" | up to 120" 144" * | .85 | 39+ | A |
| WP-LRM51 | 2" Thick Acoustic Wall Panel | up to 60" | up to 120" 144" * | .95 | 39+ | A |
| WP-RFM19 | ¾" Thick Acoustic Wall Panel | up to 60" | up to 120" 144" * | .70 | 43 | A |
| WP-RFM25 | 1" Thick Acoustic Wall Panel | up to 60" | up to 120" 144" * | .90 | 46 | A |
| WP-RFM38 | 1½" Thick Acoustic Wall Panel | up to 60" | up to 120" 144" * | .95 | 46+ | A |
| WP-RFM51 | 2" Thick Acoustic Wall Panel | up to 60" | up to 120" 144" * | 1.00 | 46+ | A |

Custom panel widths and lengths available

* 144" length subject to veneer availability

VISUAL OPTIONS

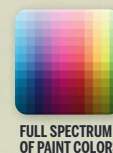
Wood Species (a small sampling of the 715+ genuine wood species/slice/grade combinations in stock)



Specialty Finishes



Additional Finishes



With over 4 million sq.ft. of veneer in inventory, SoundPly Latus Panels are available in the most comprehensive collection of real woods within the industry. All inventoried species are graded utilizing Navy Island's patented TruGrade® Wood Grading Standards. To view graded examples of veneer demonstrating the variations in grain, texture, and color inherent to wood, visit trugrade.navyisland.com.





The First Acoustic Wall Panels with **Guaranteed** Acoustic Performance.

Latus Wall Panels are fabricated from SoundPly Acoustic Panels — the first and only acoustic panels with a guarantee that their installed, real-world acoustic performance will match or exceed their ASTM laboratory-tested performance.

Why is this guarantee so significant?

It brings to light an unfortunate secret of the acoustic industry. Due to a variety of reasons, **over 96% of all installed acoustic products provide measurably less performance than their claimed, laboratory-tested performance.**

Talk to a team member to learn more about SoundPly's acoustic guarantee.

PHYSICAL DATA

Material

Latus Acoustic Wall Panels consist of a fully sealed, sound insulated, resonant cavity overlaid with a 2mm thick micro-perforated multi-ply surface.

Face Options

- 700+ Custom Wood Species/Slice/Grade combos
- Custom Paint Colors in a variety of sheens

Finish Options

- Color Match Stains for Wood Veneers
- Clear or Tinted Catalyzed Lacquer
- Clear or Tinted **ULTI-MATTE™** Flat Varnish

Weight

| | |
|---------------------|-------------------------|
| WP-LRM19 / WP-RFM19 | 1.4 lbs/ft ² |
| WP-LRM25 / WP-RFM25 | 1.8 lbs/ft ² |
| WP-LRM38 / WP-RFM38 | 2.2 lbs/ft ² |
| WP-LRM51 / WP-RFM51 | 2.6 lbs/ft ² |

Accessories

Mounting hardware to be ordered separately.

Fire Performance

Latus Wall Panels contain either a non-combustible rockwool or fiberglass core. A thin (less than .025 inches) layer of veneer, paint, or film finish is applied. Latus Wall Panels can be used in Class A environments (IBC Chapter 8 Section 803).

LEED® CREDITS

LR RF MRc4 Recycled Content

LR Series - 21% Pre-Consumer

RF Series - 30% Post-Consumer

LR RF BDCv4 EQ Acoustic Performance

LR RF EQ4.4 Low-Emitting Materials

LR RF Material Ingredient Disclosure - Option 1

Discover the entire line of SoundPly acoustic solutions...



SOUNDPLY®
developed and manufactured by
NAVY ISLAND

275 Marie Ave. East
St. Paul, MN 55118
tel. (651) 451-4454
sales@navyisland.com
www.soundply.com

LEED® is a registered trademark of the US Green Building Council. SOUNDPLY®, LATAS®, MICROPERFECTION®, DSC®, TRUGRADE®, LR Series®, RF Series®, ULTI-MATTE®, and all associated logos are trademarks of Navy Island, Inc.

The information in this document is subject to change without notice.
Navy Island assumes no responsibility for any errors that may inadvertently appear within this document.

LATUS.DS-2005E1
© 2019 Navy Island, Inc. Printed in U.S.A.
<https://soundply.com/docs/Latus-Acoustic-Wall-Panels-DS-1911e1.pdf>