

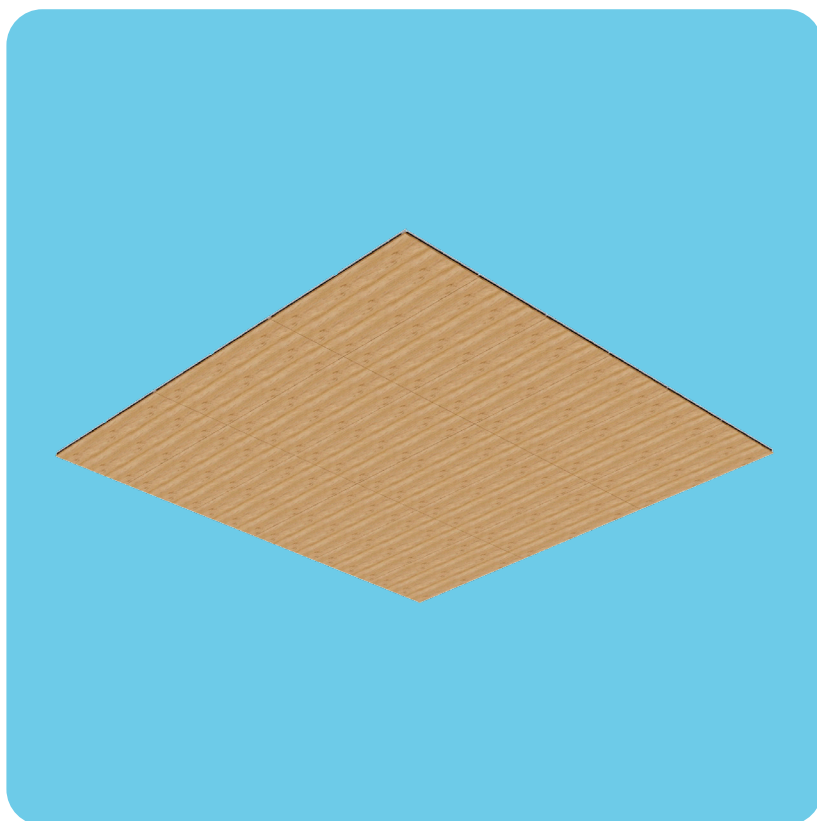
ALTA™

ACOUSTIC CEILING PANELS

OVERSIZED PANELS

EDGE RETAINER TORSION SPRINGS

INSTALLATION INSTRUCTIONS



featuring

SOUNDPLY®
ACOUSTIC PRODUCTS

developed and manufactured by

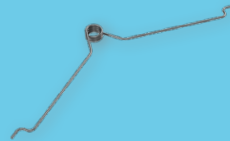
NAVY ISLAND

www.soundply.com • sales@navyisland.com
275 Marie Ave. E, St. Paul, MN 55118 • (651) 451-4454

SUPPLIED HARDWARE



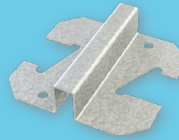
EDGE RETAINER



SPRING



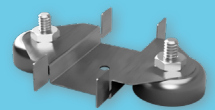
#8 5/8" SCREWS



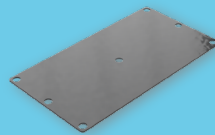
SADDLE



ALIGNMENT CROSS



MAGNET HOLDER



MAGNET PLATE

REQUIRED TOOLS & HARDWARE



TAPE MEASURE



MARKER



SCREW GUN



#2 PHILLIPS BIT



RUBBER Mallet

BEFORE BEGINNING INSTALLATION, **OPEN AND INSPECT ALL PACKAGES** TO ENSURE ALL PARTS LISTED ON THE PACKING LIST ARE INCLUDED AND UNDAMAGED.

IF ANY ITEMS ARE MISSING OR DAMAGED, CONTACT NAVY ISLAND AT (651) 451-4454.

Panel Preparation

If panels are sequence matched, location label can be found on the back of the panel. Sequenced panels must be installed according to the shop drawings. If at any point the shop drawings differ from these instructions, follow the shop drawings. If you cannot locate them, contact Navy Island for a copy before attempting to install.

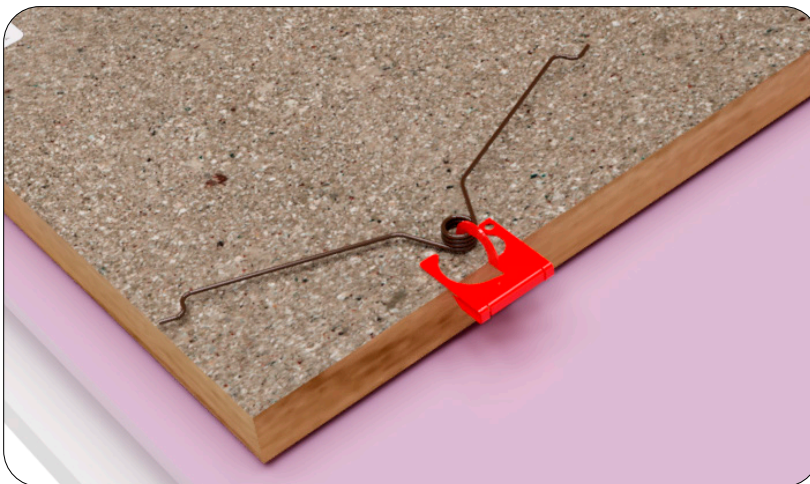
Before starting installation, ensure all wet work such as taping, painting, etc. is complete and that the T-Grid is secure, level, and square per manufacturer's instructions, CISC guidelines, and local codes.

Lay the panel face down on a soft surface and find the panel label. Orient the panel per the shop drawings to ensure correct grain direction when installed.

For edgebanding and field modifications, please see install instructions: SoundPly Panel Modifications.

FOR LOCATION OF THE EDGE
RETAINER PLEASE SEE INCLUDED
SHOP DRAWINGS

Slip the coil of the Torsion Spring under the hook on the edge retainer. Hold the retainer flat to the surface of the panel and seat with a rubber mallet.

[illegible]

INSTALLATION INSTRUCTIONS

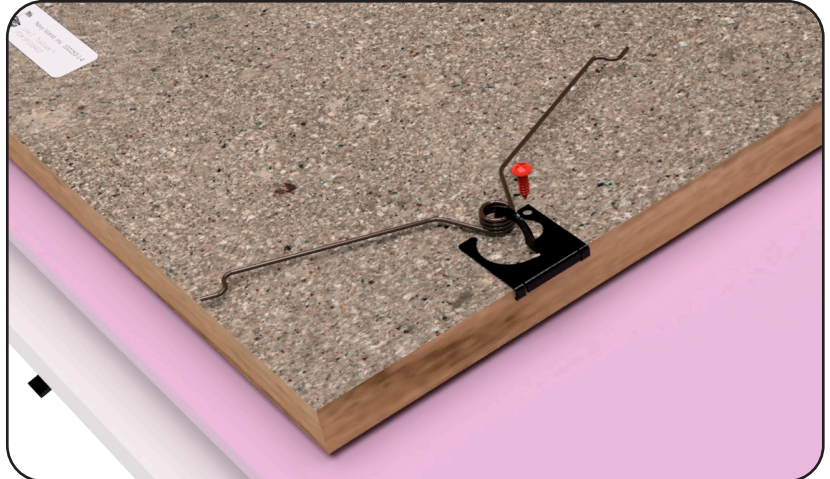
ALTA OVERSIZED CEILING PANELS EDGE RETAINER TORSION SPRINGS

Using a low speed, low torque setting, screw in each edge retainer using 5/8" screws.

3

Do NOT over tighten the screws or you will strip the anchoring material.

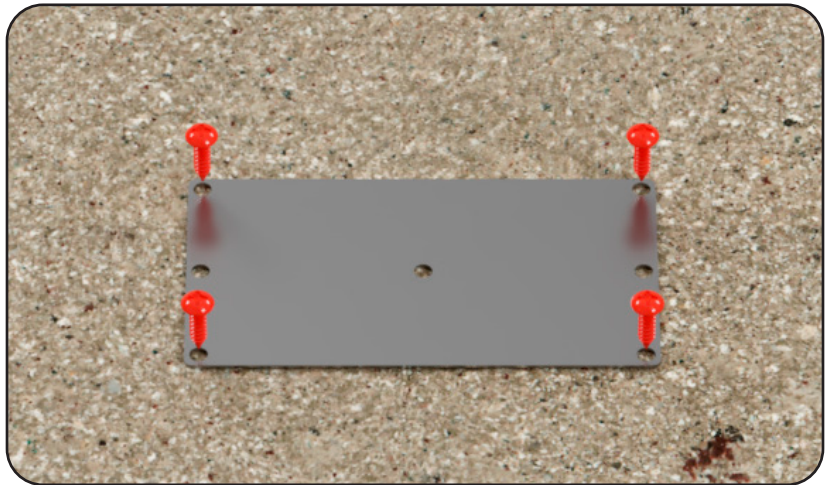
!



FOR LOCATION OF THE MAGNET HOLDER PLEASE SEE INCLUDED SHOP DRAWINGS.

Using a low speed, low torque setting, screw in each magnet plate at a max.

4



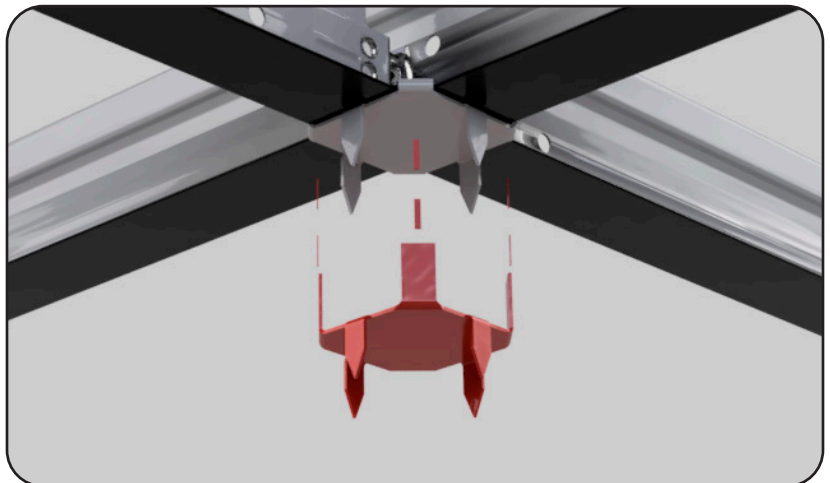
Ceiling Preparation

Place alignment crosses under each intersection on the T-Grid that corresponds to a panel corner.

5

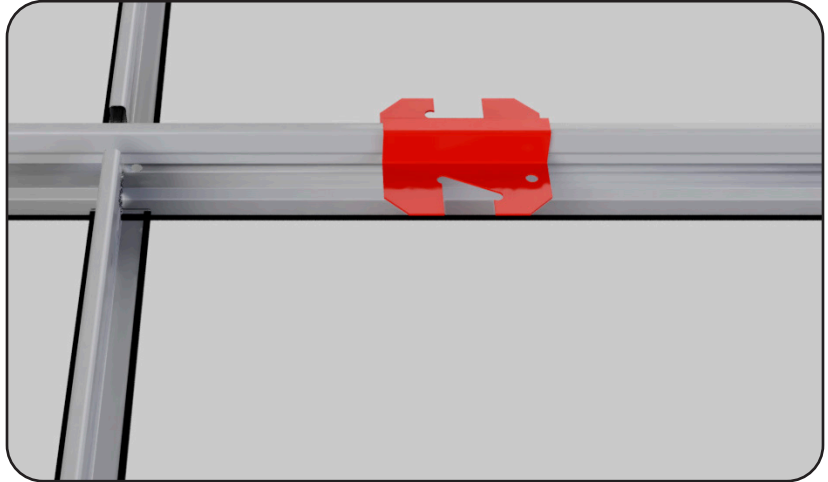
Heavy duty suspension system 15/16" T-Grid 1 1/2" tall with 1/4" rectangular bulb is required.

💡



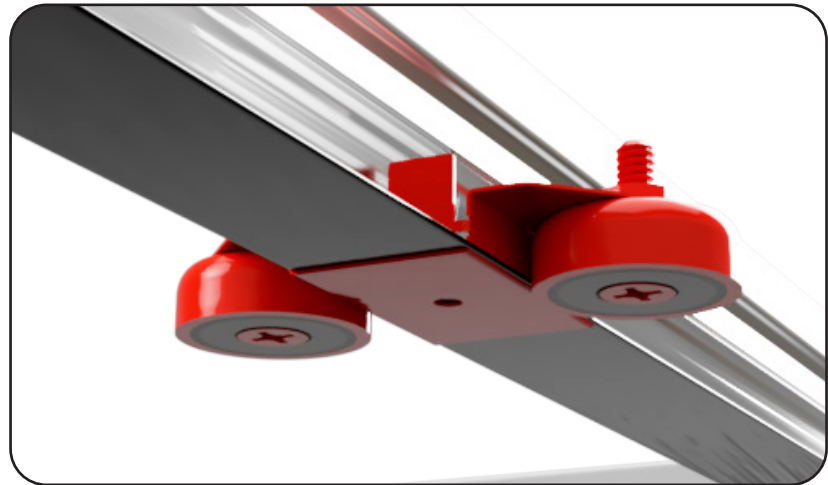
Attach the saddles on the 4' cross T's, NOT on the 2' cross T's. These saddles will correspond with the hardware mounted on the panel. Use a half saddle on the outer perimeter of the ceiling.

6



Attach the Magnet holders on the 2' cross T's by first sliding the holder over the t-grid and then bending the tabs over the lip of the t-grid. These holders will correspond with the Magnet Plate mounted on the panel.

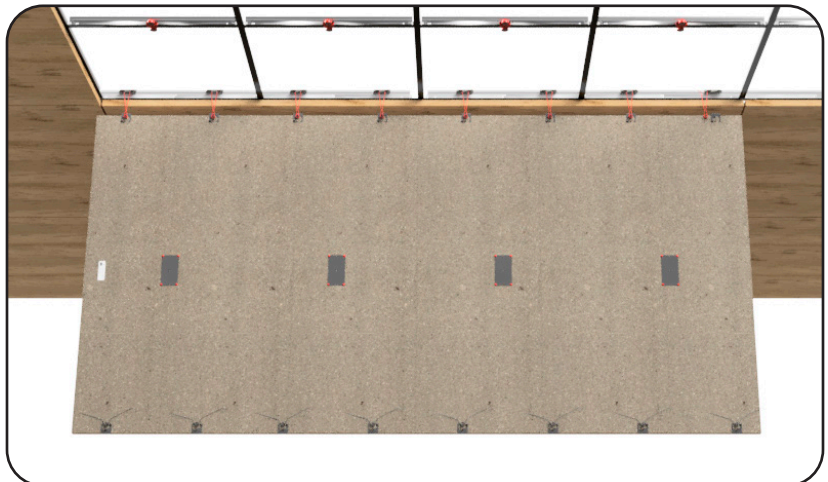
7



Installing Panel

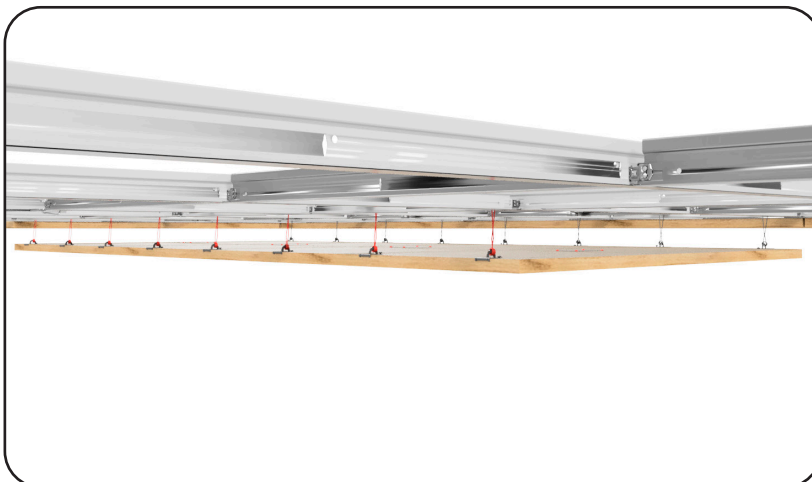
Lift the panel to the grid and connect the springs to the saddles.

8



Swing the panel up and attach the springs on the opposite side of panel.

9



Once all springs are secure, gently raise the panel one side at a time until panel is pulled into place.

10

Check the seating of the panel corners, which should be resting between the alignment clips.

«

