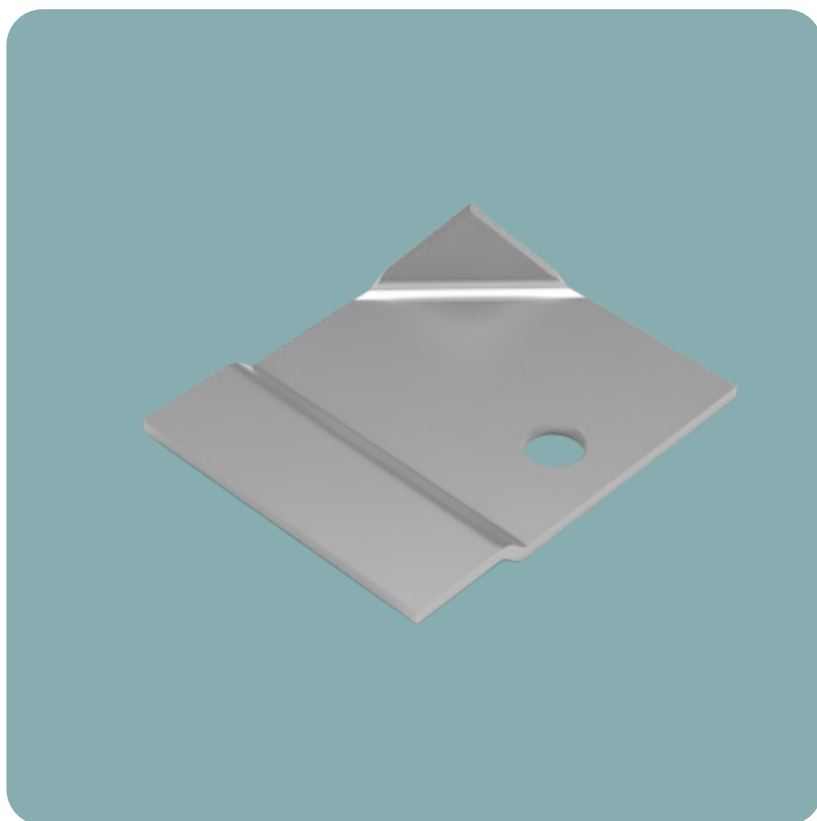


ALTA™

ACOUSTIC CEILING PANELS

TWIST CLIP

INSTALLATION INSTRUCTIONS



featuring

SOUNDPLY®

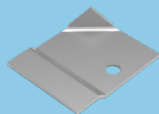
ACOUSTIC PRODUCTS

developed and manufactured by

NAVY ISLAND

www.soundply.com • sales@navyisland.com
275 Marie Ave. E, St. Paul, MN 55118 • (651) 451-4454

SUPPLIED HARDWARE



TWIST CLIP



HELIX SCREW

REQUIRED TOOLS & HARDWARE



TAPE MEASURE



MARKER



SCREW GUN



TORQUE SCREWDRIVER



PHILLIPS BIT

BEFORE BEGINNING INSTALLATION, **OPEN AND INSPECT ALL PACKAGES** TO ENSURE ALL PARTS LISTED ON THE PACKING LIST ARE INCLUDED AND UNDamaged.

IF ANY ITEMS ARE MISSING OR DAMAGED, CONTACT NAVY ISLAND AT (651) 451-4454.

INSTALLATION INSTRUCTIONS

Twist Clip

If panels are sequence matched, location label can be found on the back of the panel. Sequenced panels **must** be installed according to the shop drawings. If at any point the shop drawings differ from these instructions, follow the shop drawings. If you cannot locate them, contact Navy Island for a copy before attempting to install. Before starting installation, ensure all wet work such as taping, painting, etc. is complete.

Lay the panel face down on a soft surface and find the panel label. Orient the panel per the shop drawings to ensure correct grain direction when installed.

For edgebanding and field modifications, please see install instructions: "SoundPly Cutting & Edgebanding Instructions".

Installation

Install each twist clip using a single helix screw 3" OC from each edge of the panel with a max of 24" between each clip or as shown on shop drawings .

To ensure that the screws are not over tightened, use a torque limiting screw driver set to no more than **6 inch-pounds.**

ALTA CEILING PANELS TWIST-CLIP

[illegible]

INSTALLATION INSTRUCTIONS

Place panel into place and twist each twist clip ensuring they engage onto t-grid or wall angle.

It is best to Install the perimeter panels with the Twist Clips first, while there is access above the ceiling. Then install the full sized center panels.

For information on how to install remaining panels using torsion springs please see our bayonet torsion spring install instructions.

3

