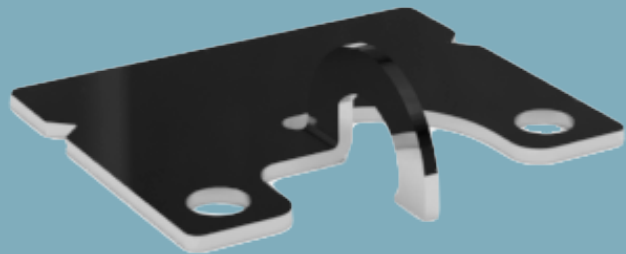


# ALTA™

## ACOUSTIC CEILING PANELS

FIELD SPRING RETAINER

### INSTALLATION INSTRUCTIONS



featuring

**SOUNDPLY®**

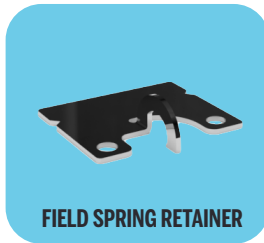
ACOUSTIC PRODUCTS

developed and manufactured by

**NAVY ISLAND**

[www.soundply.com](http://www.soundply.com) • [sales@navyisland.com](mailto:sales@navyisland.com)  
275 Marie Ave. E, St. Paul, MN 55118 • (651) 451-4454

SUPPLIED  
HARDWARE



REQUIRED TOOLS  
& HARDWARE



BEFORE BEGINNING INSTALLATION, **OPEN AND INSPECT ALL PACKAGES** TO ENSURE ALL PARTS LISTED ON THE PACKING LIST ARE INCLUDED AND UNDAMAGED.

IF ANY ITEMS ARE MISSING OR DAMAGED, CONTACT NAVY ISLAND AT (651) 451-4454.

Field Spring Retainer

If panels are sequence matched, The location label can be found on the back of the panel. **Sequenced panels must be installed according to the shop drawings.** If at any point the shop drawings differ from these instructions, follow the shop drawings. If you cannot locate them, contact Navy Island for a copy. Before starting installation, ensure all wet work such as taping, painting, etc. is complete.



**NAVY ISLAND**  
— ENCINO, CALIFORNIA —  
275 Maple Avenue East  
West St. Paul, MN 55118  
www.navyisland.com

| SHEET LIST |                           | RECEIVING INSTRUCTIONS:<br>SOUNDPLY ACOUSTICAL PANEL |
|------------|---------------------------|--|
| NO.        | REFERENCE DRAWING'S DATE: | <b>INSPECTOR:</b>                                    |
| DATE:      | JOB ADDRESS:              | REVISIONS:   |
| SPECIES:   | DRAWING SET DATE:         | REVISIONS:   |
| GRADE:     | DATE:                     | REVISIONS:   |
| SAMPLE #:  | DATE:                     | REVISIONS:   |
| FINISH:    | DATE:                     | REVISIONS:   |
| REMARKS:   | DATE:                     | REVISIONS:   |

**\*\* PLEASE NOTE \*\***

These drawings have been created for the sole use of Navy Island, Inc. The depiction of materials that are not supplied by NIS are to be used as a reference only and are not to be used as a substitute for the product. These drawings are to be used in tandem with NIS' Installation Instructions Guidelines to achieve a proper and effective installation. Installation of NIS products, including hardware, that does not meet NIS' Installation Instructions Guidelines voids NIS' warranty and is not the responsibility of Navy Island, Inc.

Lay the panel face down on a soft surface and find the panel label. Orient the panel per the shop drawings to ensure correct grain direction when installed.



For edgebanding and field modifications, please see "SoundPly Cutting & Edgebanding Instructions."



Installation

FOR LOCATION OF THE FIELD SPRING RETAINER SEE INCLUDED Shop Drawings.



Align the marks on hardware to the edge of the T-grid. This allows a portion of the retainer to be between the panel and the T grid.



## INSTALLATION INSTRUCTIONS

## ALTA CEILING PANELS FIELD SPRING RETAINER

Slip the coil of the Torsion Spring under the hook on the Field Spring Retainer. Using a low speed, low torque setting, screw in helix screws.

3

*Do NOT over tighten the screws or you will strip the anchoring material.*

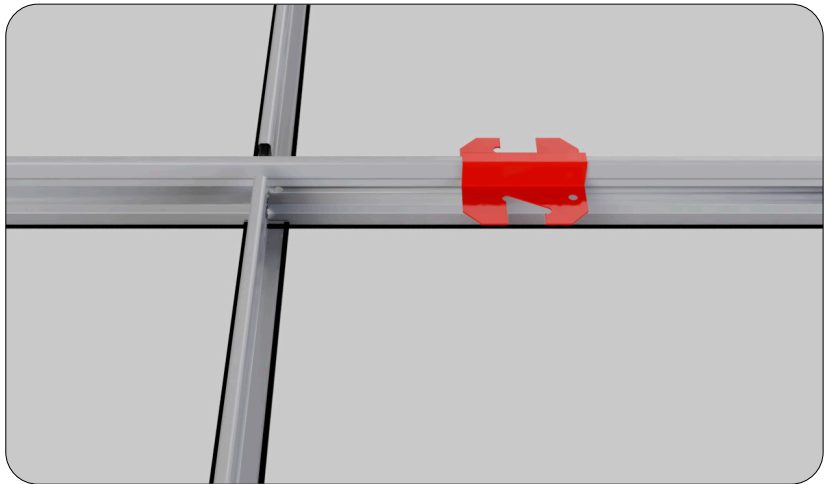
!



### Ceiling Preparation

Attach the T-Grid saddles on the 4' cross T's NOT the 2' cross T's. These saddles will correspond with the hardware mounted on the panel. Use a half saddle on the outer perimeter.

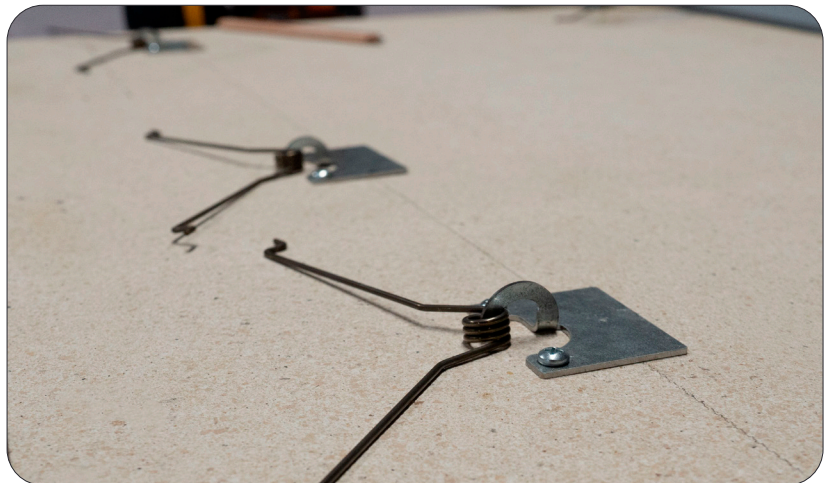
4



### Installing Panel

Lift the panel to the grid and connect the springs to the T-Grid saddles.

5



## INSTALLATION INSTRUCTIONS

Swing the panel up and attach the springs on the opposite side of panel.

6



Once all springs are secure, gently raise the panel one side at a time until panel is pulled into place.

7

*Check the seating of the panel and how it relates to the other panels.*



*SoundPly panels are NOT structural. Light fixtures, diffusers, speakers etc. must be attached to the structure.*

