

CELLA™

ACOUSTIC BAFFLES

HANGER BOLT

INSTALLATION INSTRUCTIONS



featuring

SOUNDPLY®

ACOUSTIC PRODUCTS

developed and manufactured by

NAVY ISLAND

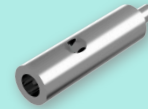
www.soundply.com • sales@navyisland.com
275 Marie Ave. E, St. Paul, MN 55118 • (651) 451-4454

SUPPLIED HARDWARE

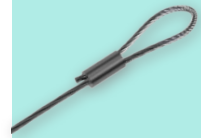
REQUIRED TOOLS & HARDWARE



HANGER BOLT



ADJUSTABLE COUPLER



5' LOOP CABLE



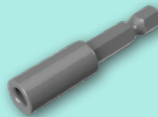
TAPE MEASURE



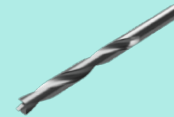
MARKER



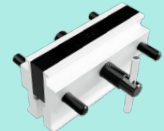
SCREW GUN



1 5/8" HANGER BOLT DRIVER



3/16" BRAD POINT DRILL



DRILL BIT GUIDE



BLUE LOCTITE

BEFORE BEGINNING INSTALLATION, **OPEN AND INSPECT ALL PACKAGES** TO ENSURE ALL PARTS LISTED ON THE PACKING LIST ARE INCLUDED AND UNDAMAGED.

IF ANY ITEMS ARE MISSING OR DAMAGED, CONTACT NAVY ISLAND AT (651) 451-4454.

INSTALLATION INSTRUCTIONS

Baffle Installation

If baffles are specific to their location, the label can be found on the top of the baffles and must be installed according to the shop drawings. If at any point the shop drawings differ from these instructions, follow the shop drawings. If you cannot locate them, contact Navy Island for a copy before attempting to install.

Before starting installation, ensure all wet work such as taping, painting, etc. is complete and that the T-Grid, Unistrut or anchors are secure, level and square per manufacturer's instructions, CISCA guidelines and local codes.

Lay the baffle bottom edge down on a soft surface and find the baffle label. Orient the baffle per the shop drawings to ensure correct direction when installed.

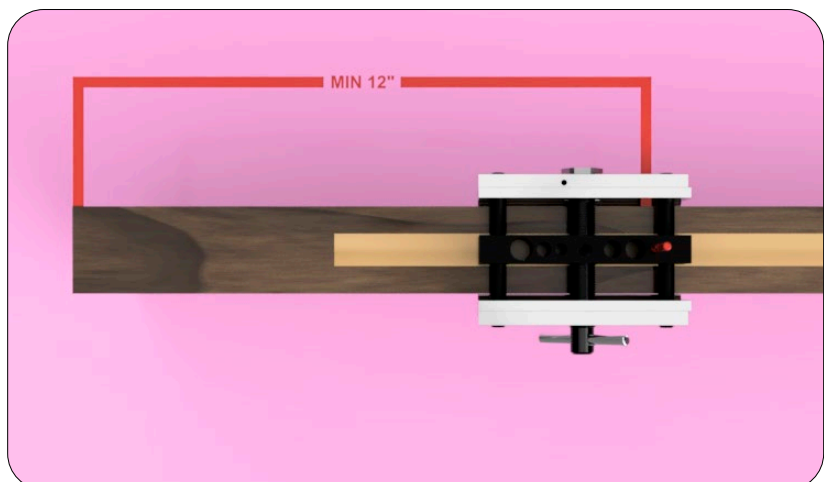
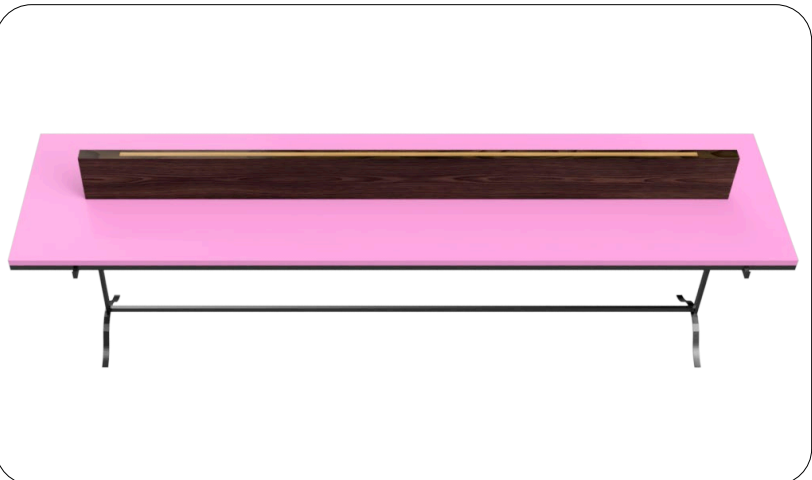
The top of the baffle can be located by the location staple. If no staple can be found, please contact your Navy Island salesman.

For edgebanding and field modifications, please see Install Instructions: SoundPly Panel Modifications.

Using a drill bit guide, drill a 3/16" pilot hole a minimum of 12" from each end of the baffle.

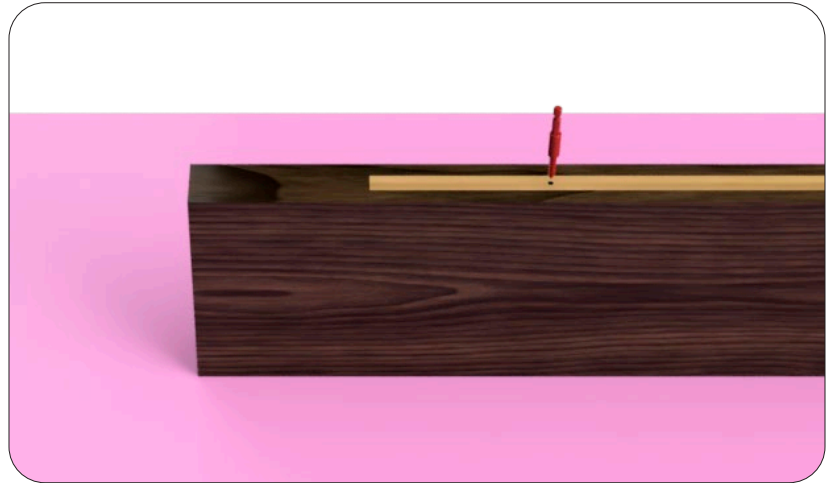
Hardware shown in these installation instructions come standard.

CELLA BAFFLE HANGER BOLT INSTALLATION

[illegible]

Using a 1/4" hanger bolt driver, screw in provided hanger bolt until course threads are no longer visible.

3

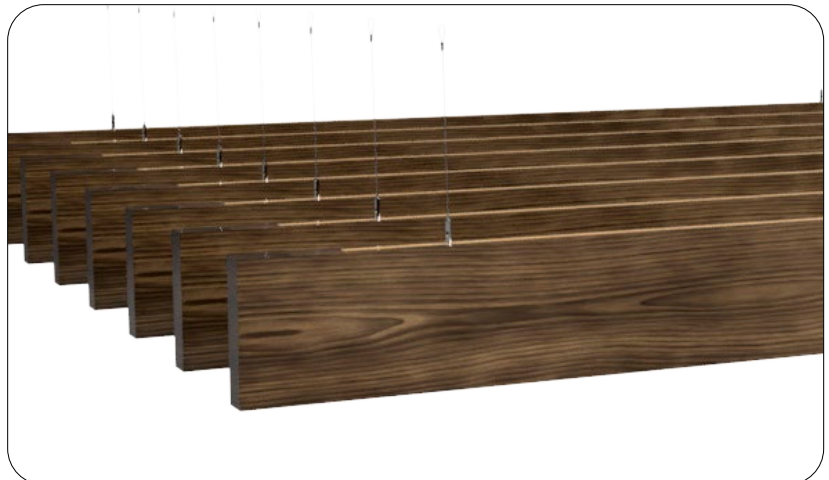


Screw adjustment coupler to hanger bolt and hang.

4

Use Blue Loctite to ensure that the adjustment coupler does not unscrew.

!



For more hardware options using the SoundPly baffle hanger bolt, please see install hardware brochure: SoundPly Cella Acoustic Baffle installation hardware brochure.

💡

