

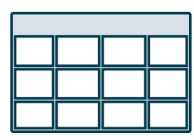
Suspended Baffle Attachments

SoundPly® and Rensa™ Acosutic Lighting



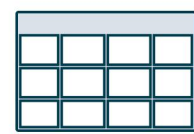
**NAVY
ISLAND**

Table of Contents



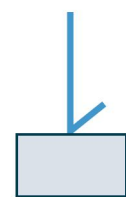
Baffle Options

Page 1



Hardware List

Page 2

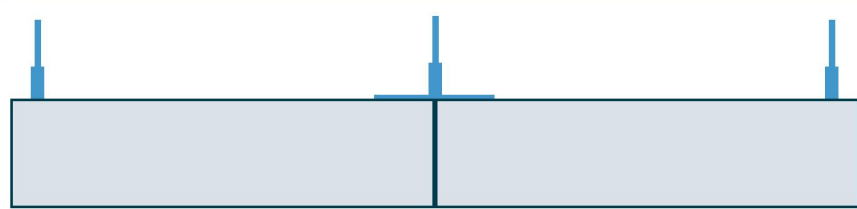


Adjust at Baffle



Individual Baffle

Page 3

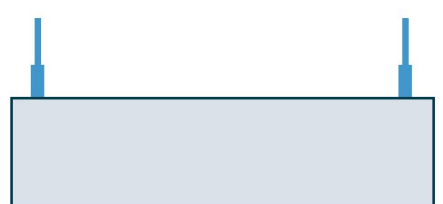


Baffle in Series

Page 4

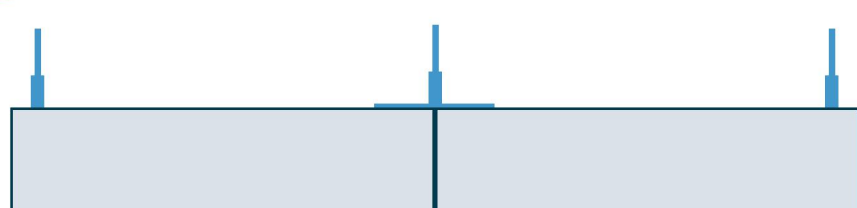


Adjust at Ceiling



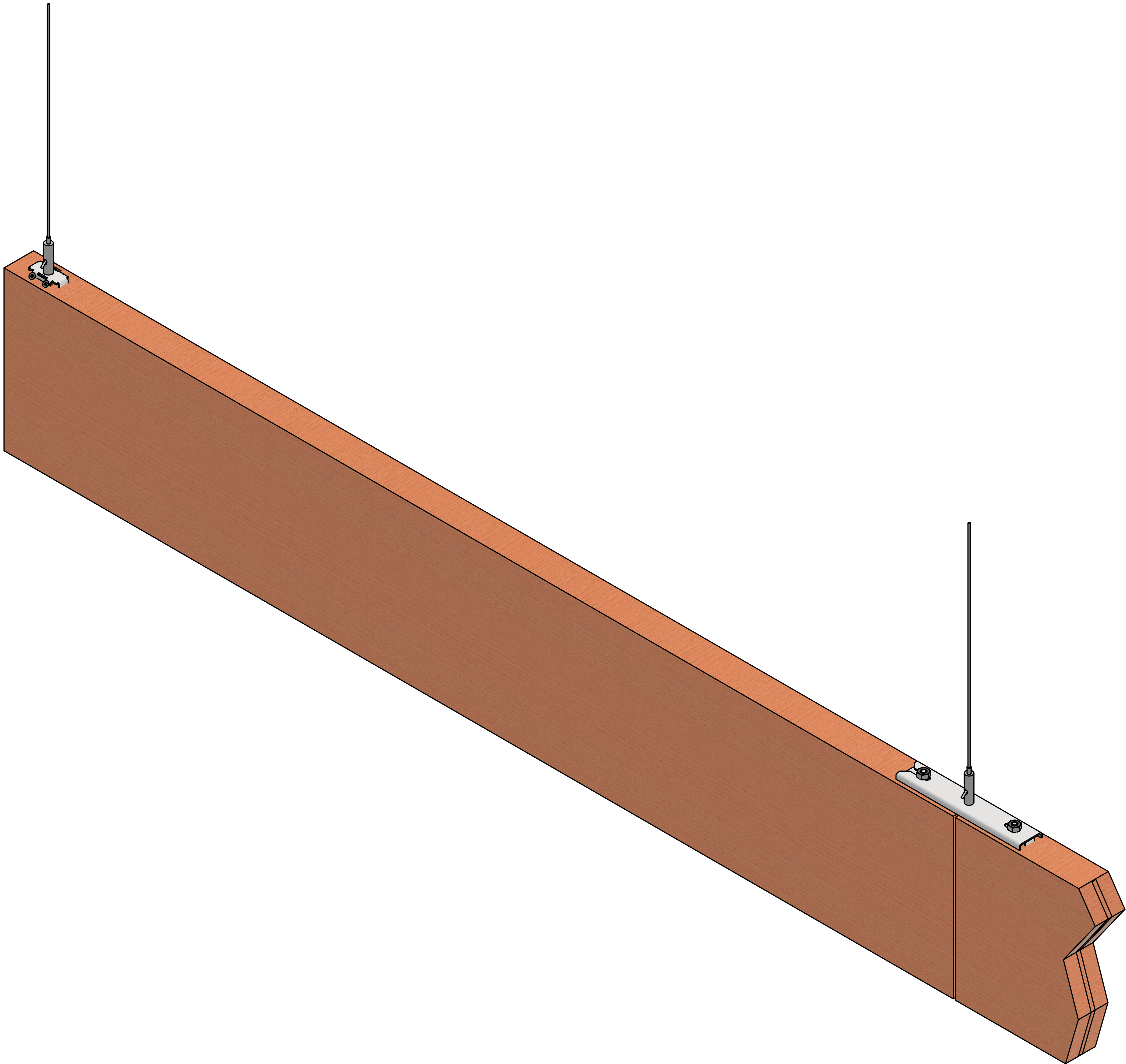
Individual Baffle

Page 5



Baffle in Series

Page 6



Baffle Options

SoundPly® and Rensa™ Acoustic Lighting



		Asc end	Cella	Tilde	Ascend Lit	Cella Lit	Tilde Lit
Adjust at Baffle		✓	✓	✓	✓	✓	✓
Adjust at Ceiling		✓	✓	✓	✓	✓	✓

Hardware List

SoundPly® and Rensa™ Acoustic Lighting

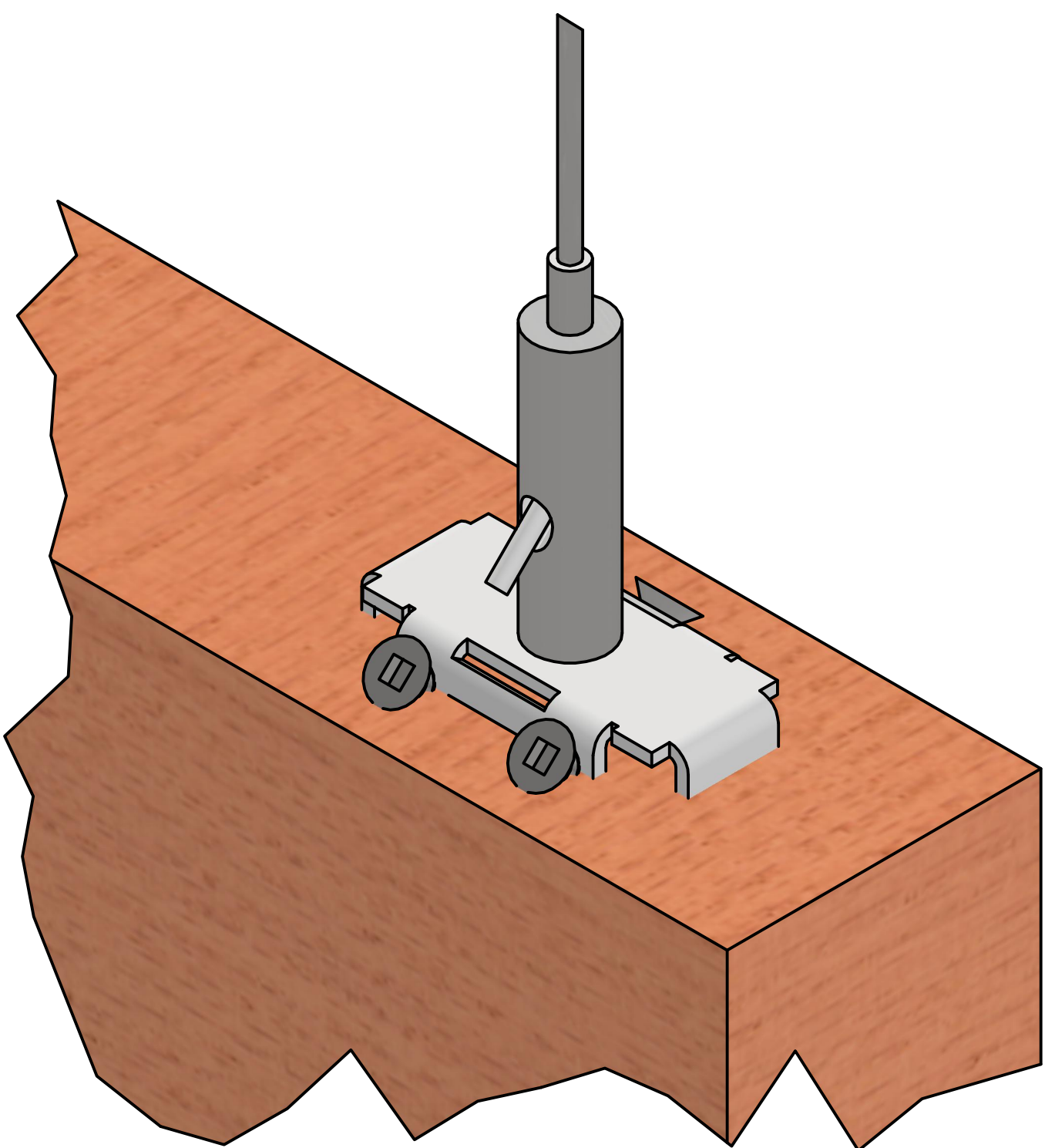
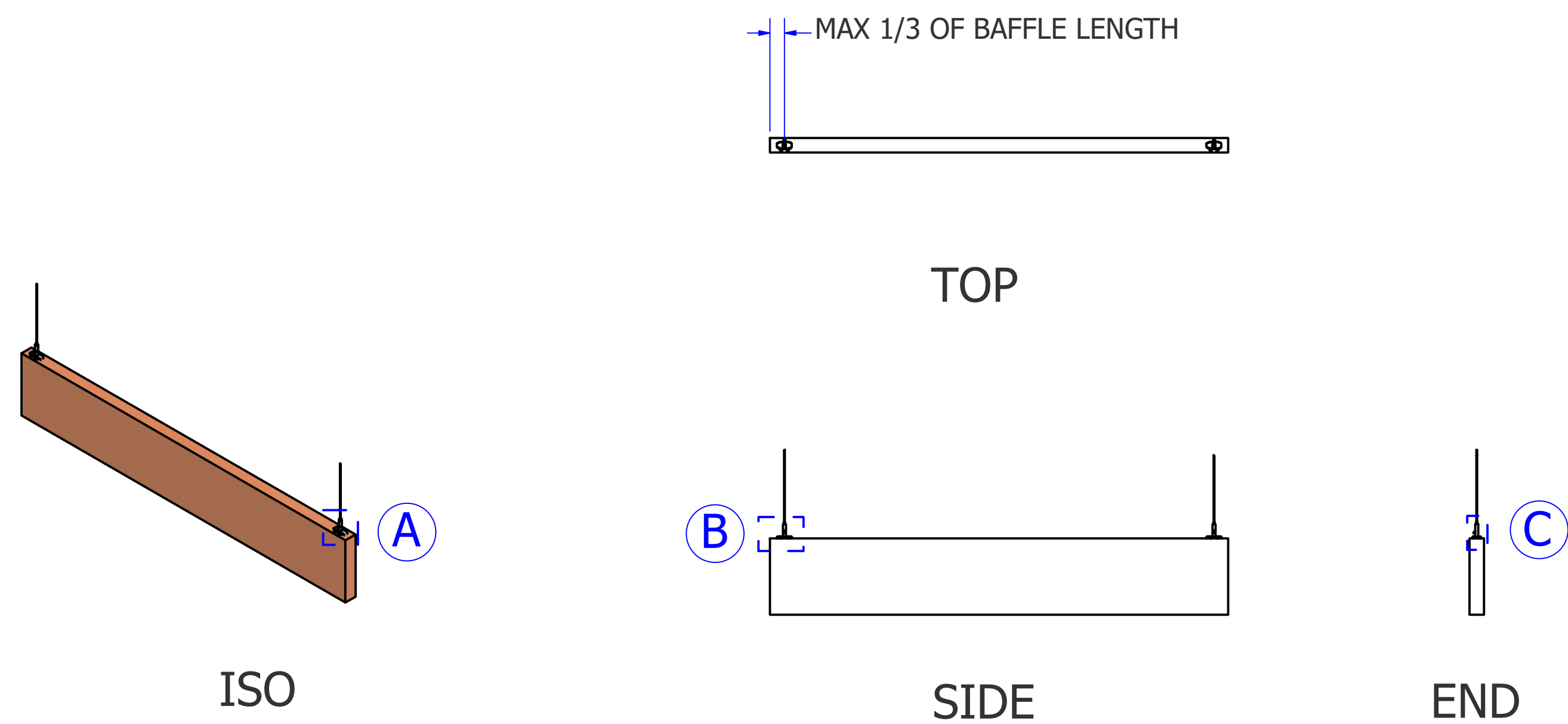
Supplied by Navy Island

Name	Part Number
3M Dual Lock™	H303-1331
Adjustable Coupler	H301-0834
Adjustable Hook	H301-0916
Bridge Plate Short Post	H303-1330
Cella® Baffle	
Hex Nut 1/4"-20	HA03-1319
5' Loop Cable	H302-0866
10' Loop Cable	H302-0867
15' Loop Cable	H302-0868
20' Loop Cable	H302-0869
Non-Adjustable Coupler	H301-0964
Screw for X-Hanger	HA01-1315
5' Terminal Cable	H302-0960
10' Terminal Cable	H302-0961
15' Terminal Cable	H302-0962
20' Terminal Cable	H302-0963
X-Hanger Short Post	H301-1317

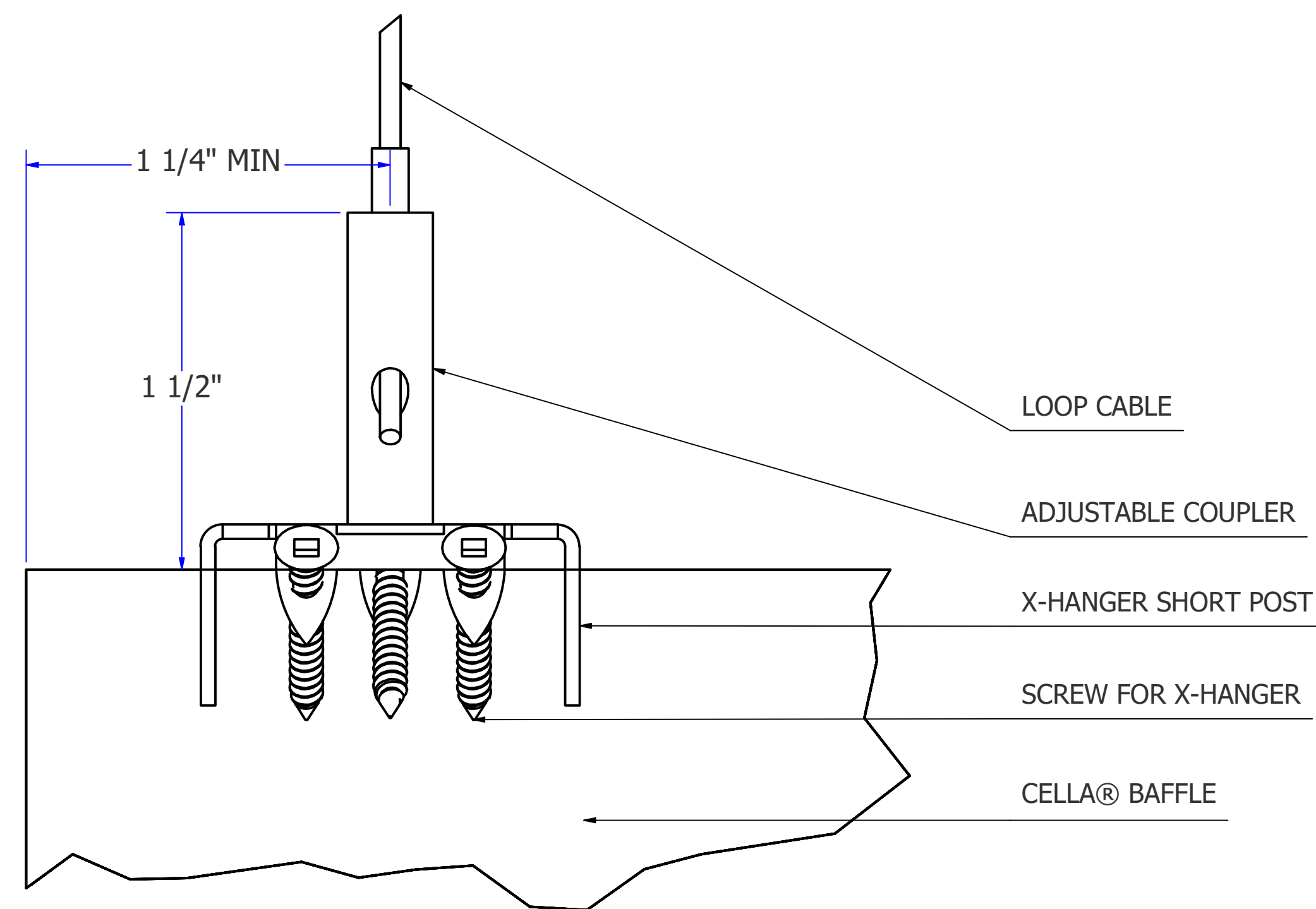
Suspended Individual Baffle - Adjust at Baffle

SCALE BASED ON 24" x 36" SHEET SIZE.

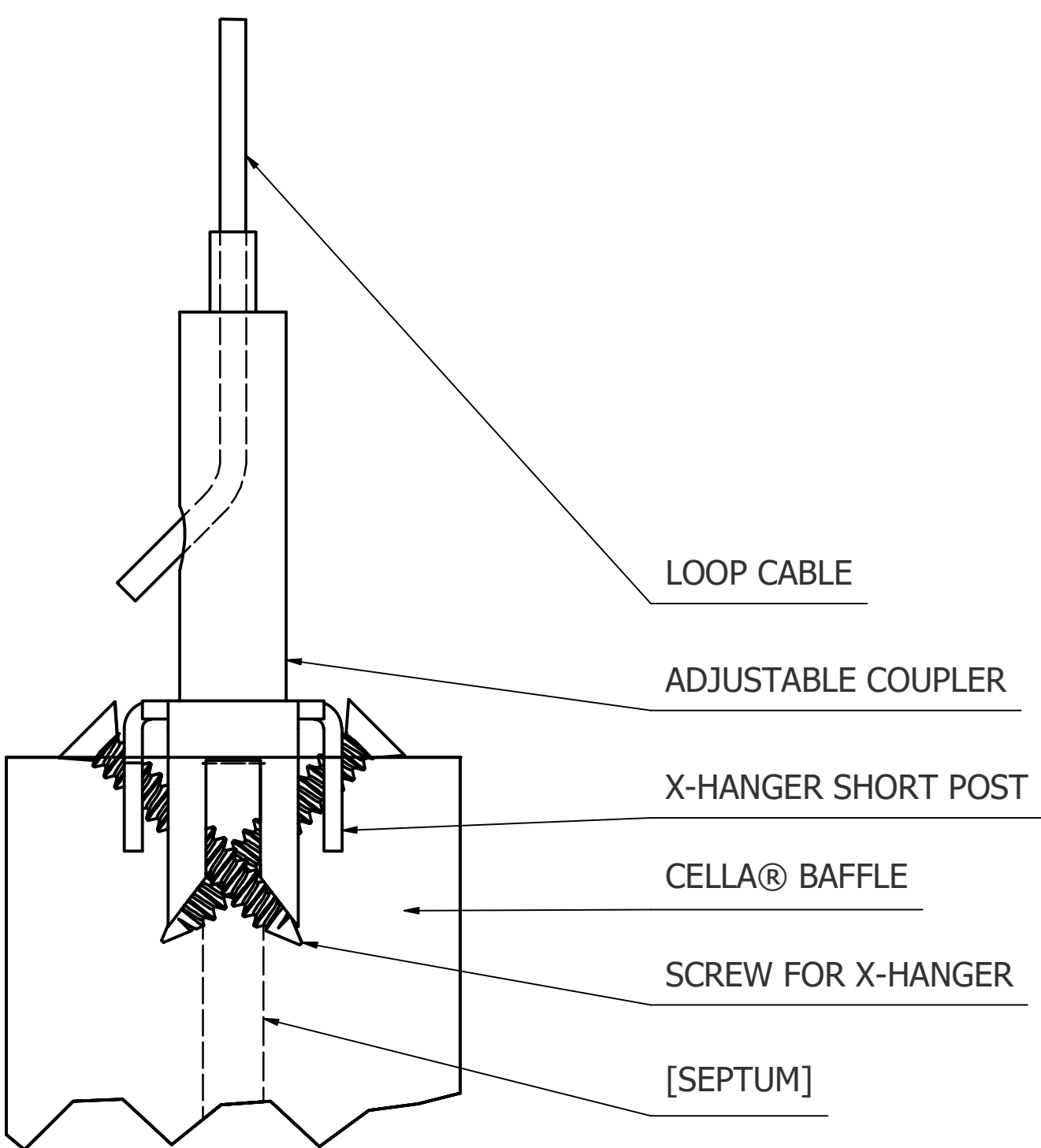
SUPPLIED BY NAVY ISLAND
ADJUSTABLE COUPLER
CELLA® BAFFLE
LOOP CABLE
SCREW FOR X-HANGER
X-HANGER SHORT POST



(A) ISO DETAIL - ADJ. COUPLER ASSEMBLY



(B) SIDE DETAIL - ADJ. COUPLER ASSEMBLY



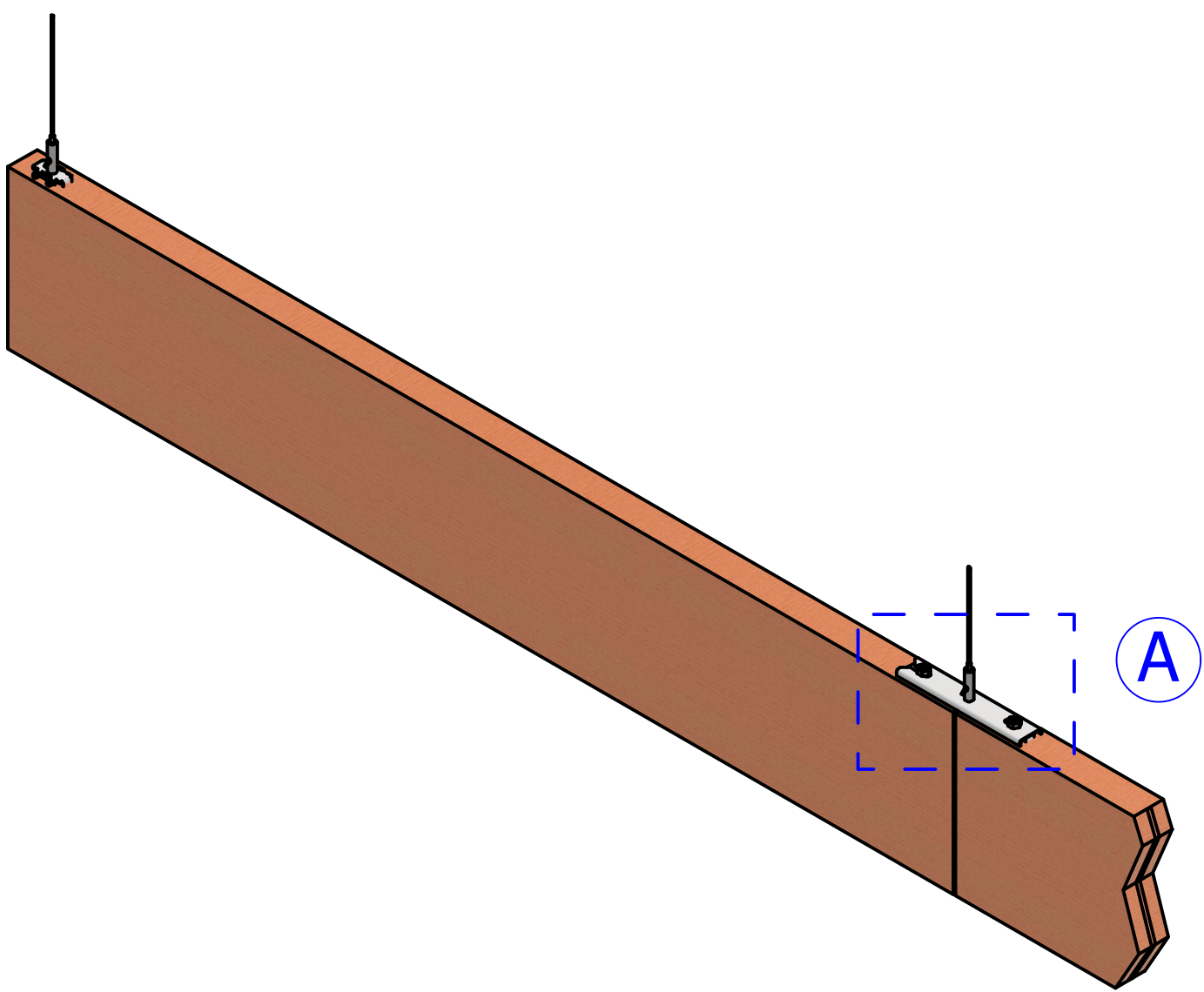
(C) END DETAIL - ADJ. COUPLER ASSEMBLY



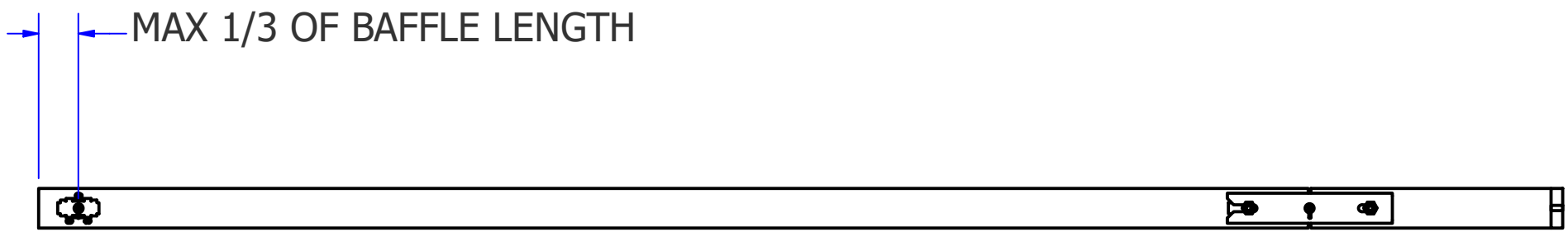
Suspended Baffle in Series - Adjust at Baffle

SCALE BASED ON 24" x 36" SHEET SIZE.

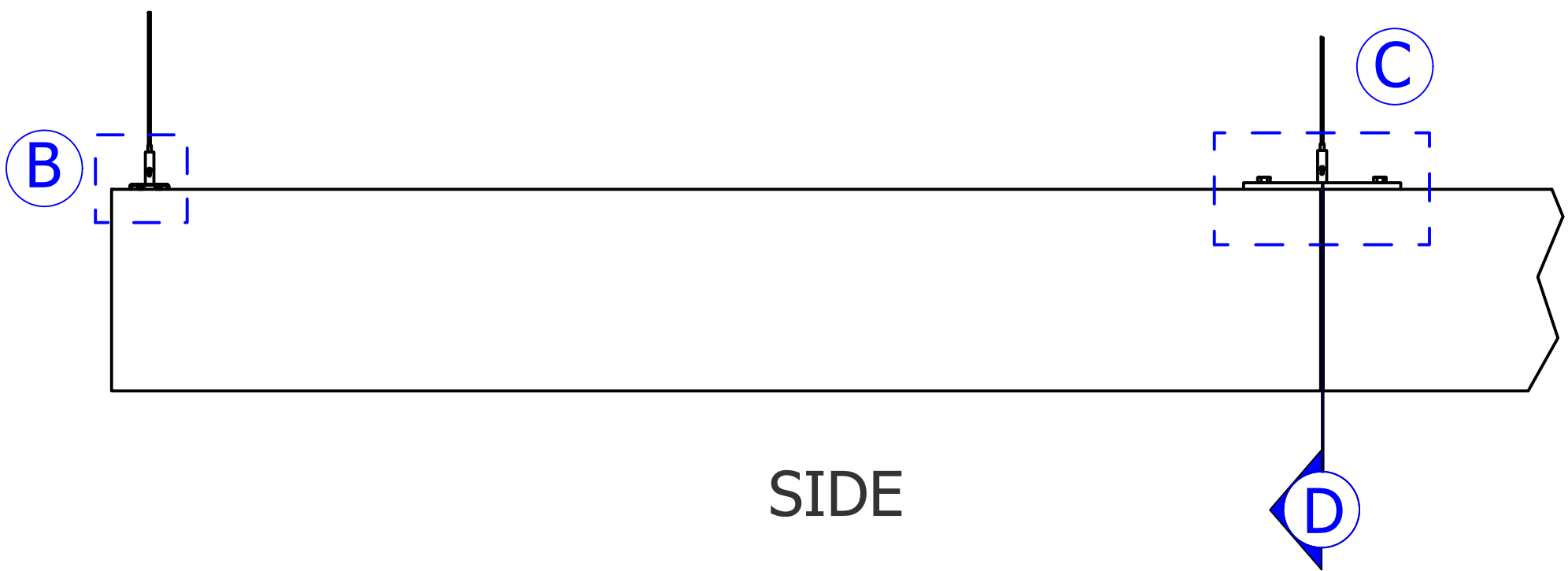
SUPPLIED BY NAVY ISLAND
3M DUAL LOCK™
ADJUSTABLE COUPLER
BRIDGE PLATE SHORT POST
CELLA® BAFFLE
HEX NUT 1/4"-20
SCREW FOR X-HANGER
X-HANGER SHORT POST



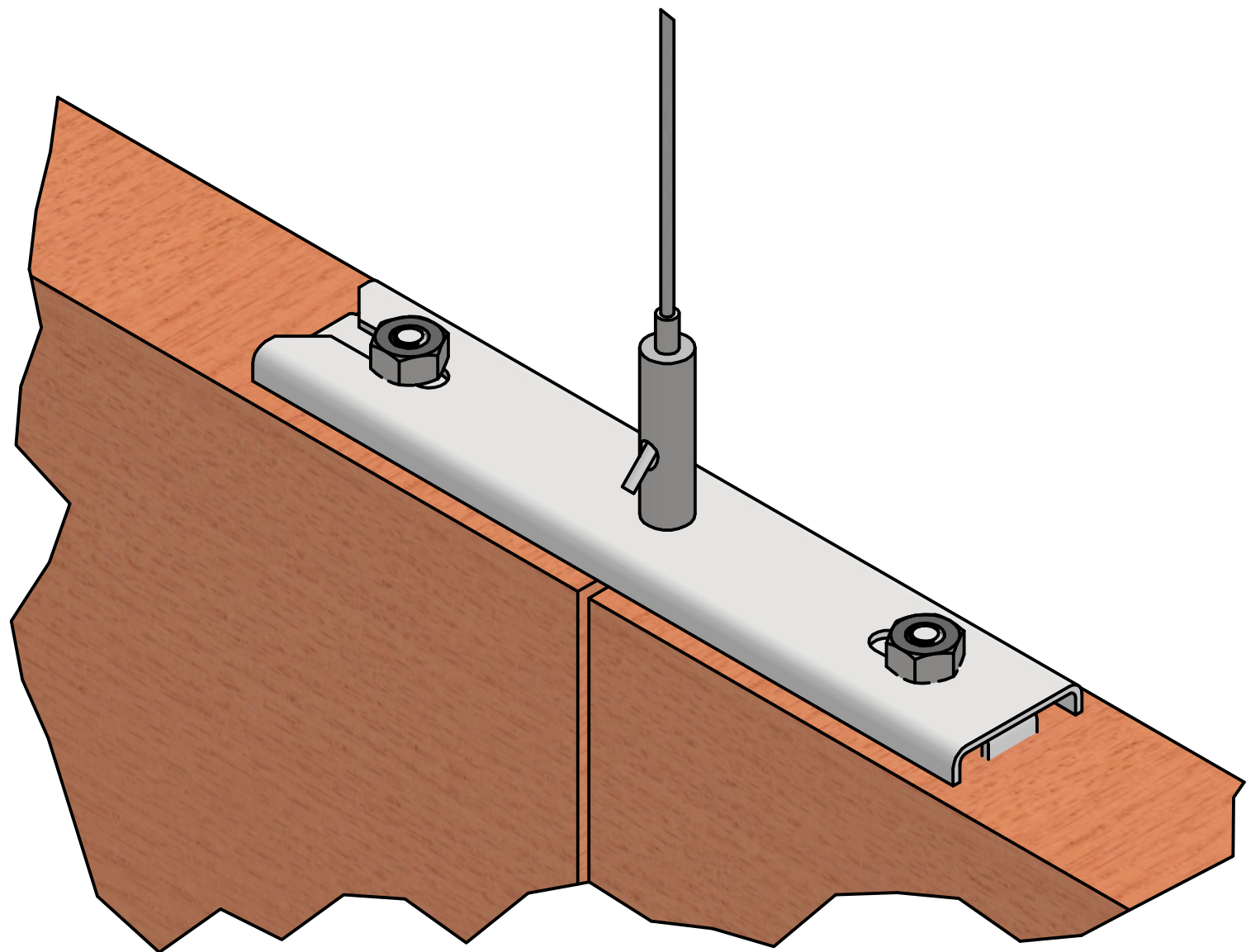
ISO



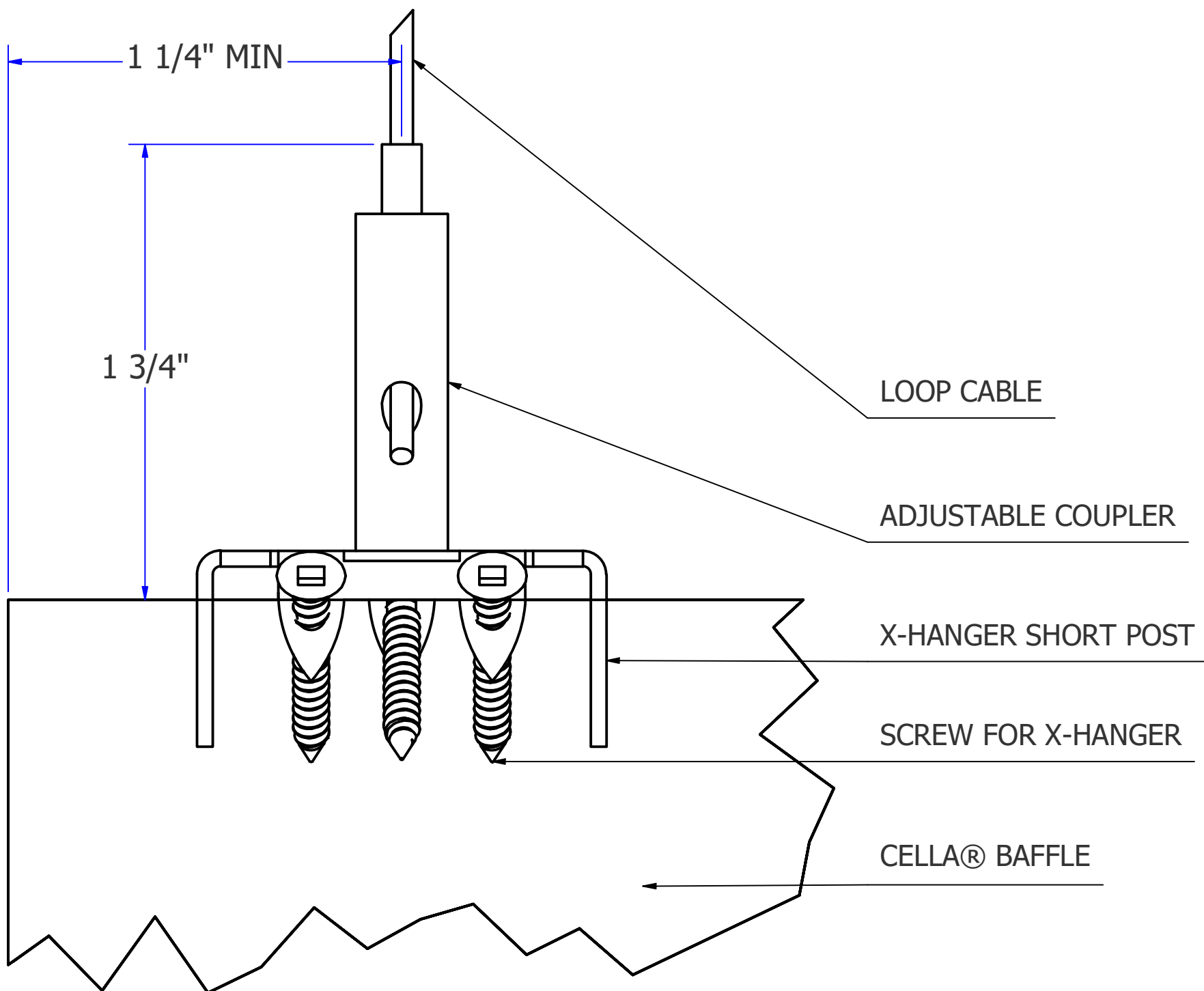
TOP



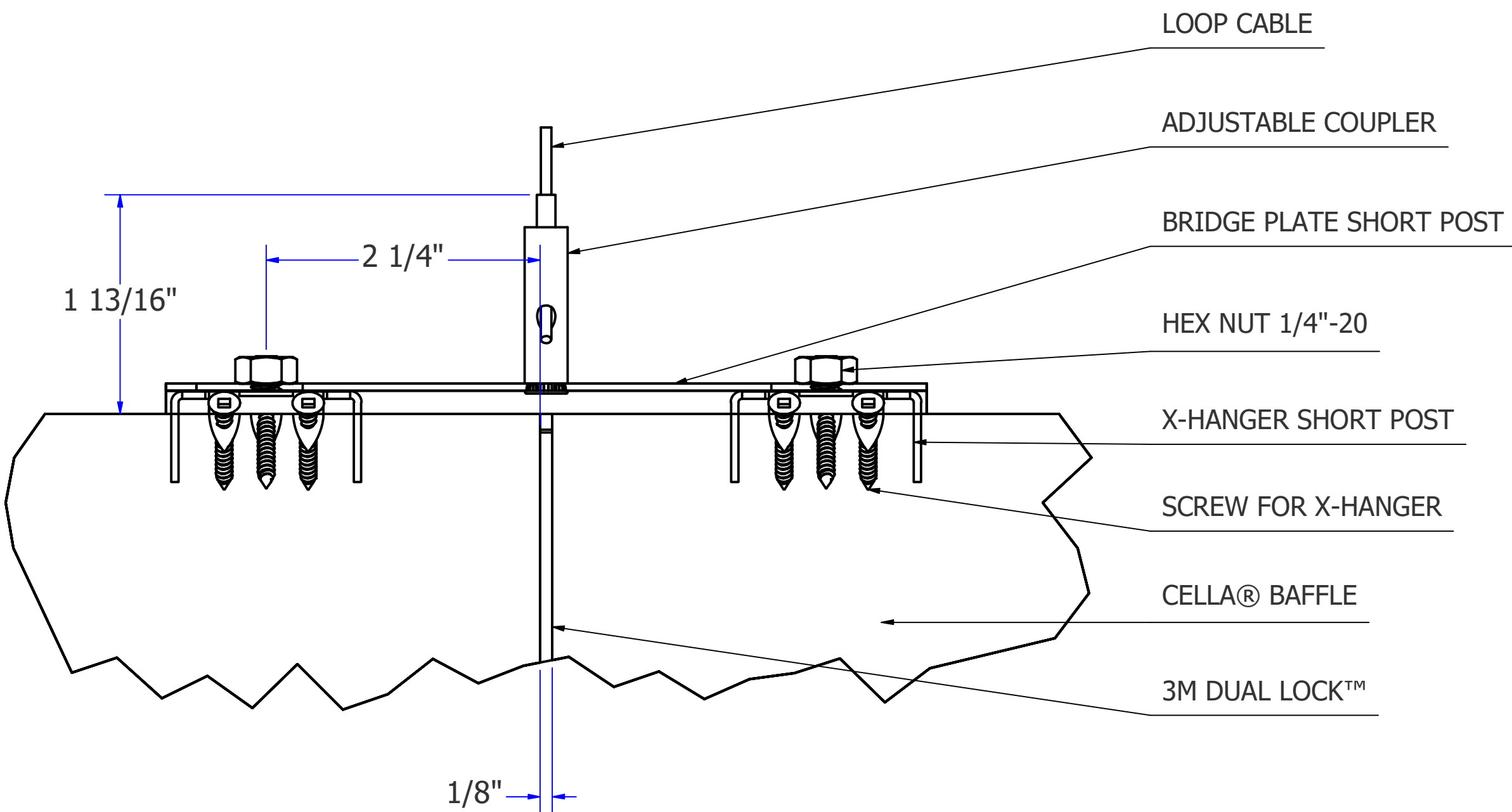
SIDE



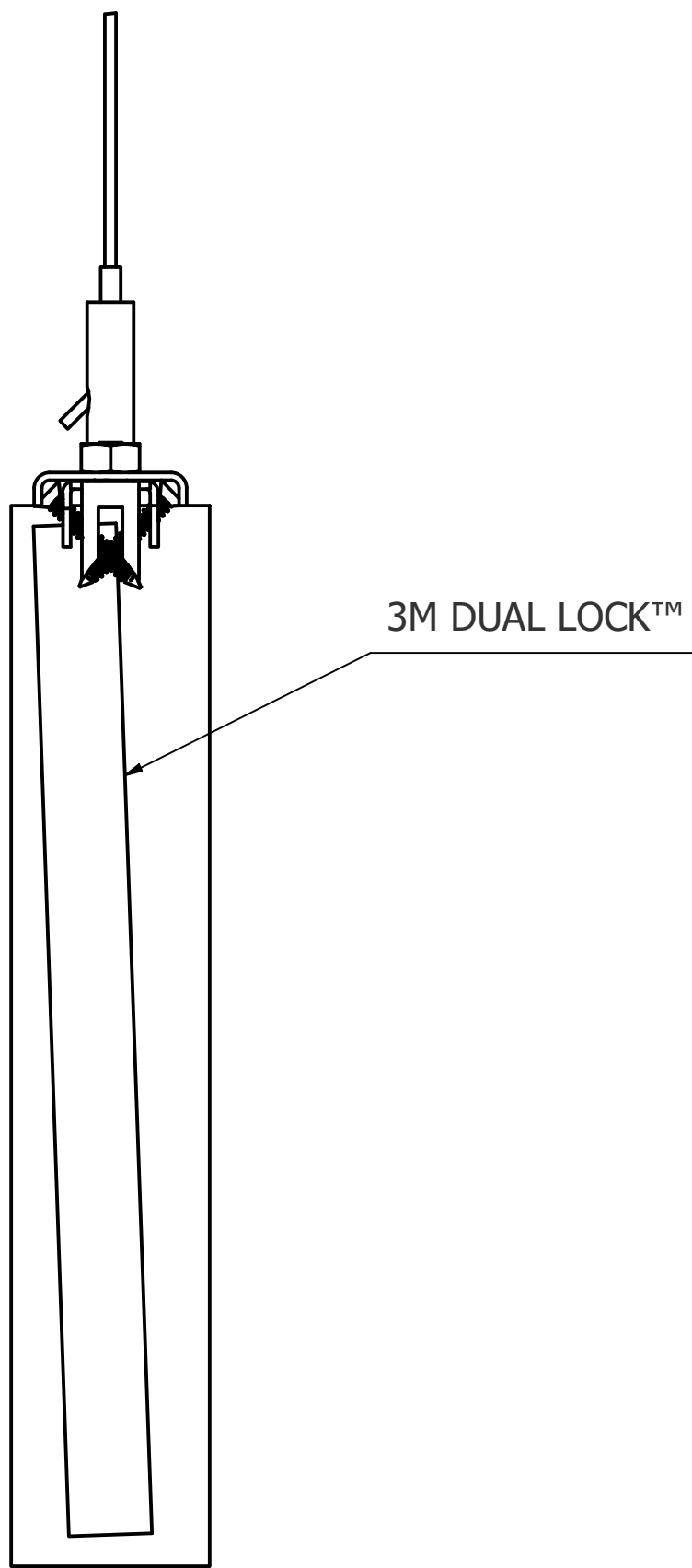
Ⓐ ISO DETAIL - BRIDGE PLATE ASSEMBLY



Ⓑ SIDE DETAIL - ADJ. COUPLER ASSEMBLY



Ⓒ SIDE DETAIL - BRIDGE PLATE ASSEMBLY



Ⓓ END SECTION - 3M DUAL LOCK™ ASSEMBLY



Suspended Individual Baffle - Adjust at Ceiling

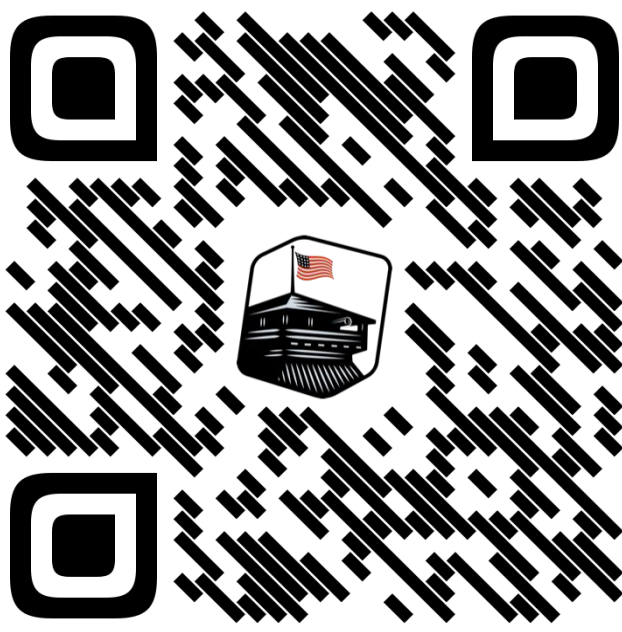


These drawings have been created for illustrative purposes. The depiction of materials are not to be used as a submittal for that product.

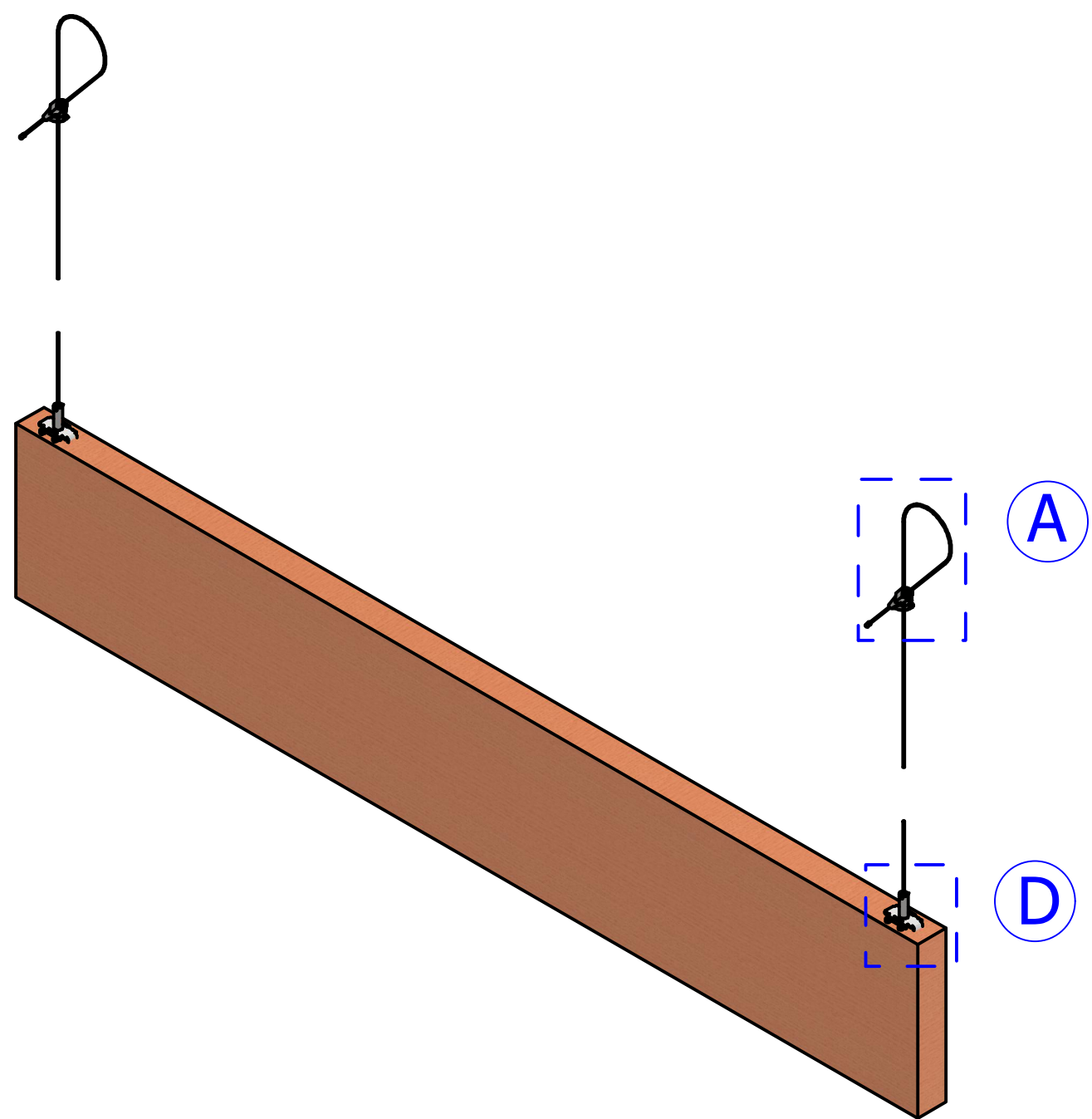
SCALE BASED ON 24" x 36" SHEET SIZE.

SUPPLIED BY NAVY ISLAND
CELLA® BAFFLE
NON-ADJUSTABLE COUPLER
ADJUSTABLE HOOK
TERMINAL CABLE
SCREW FOR X-HANGER
X-HANGER SHORT POST

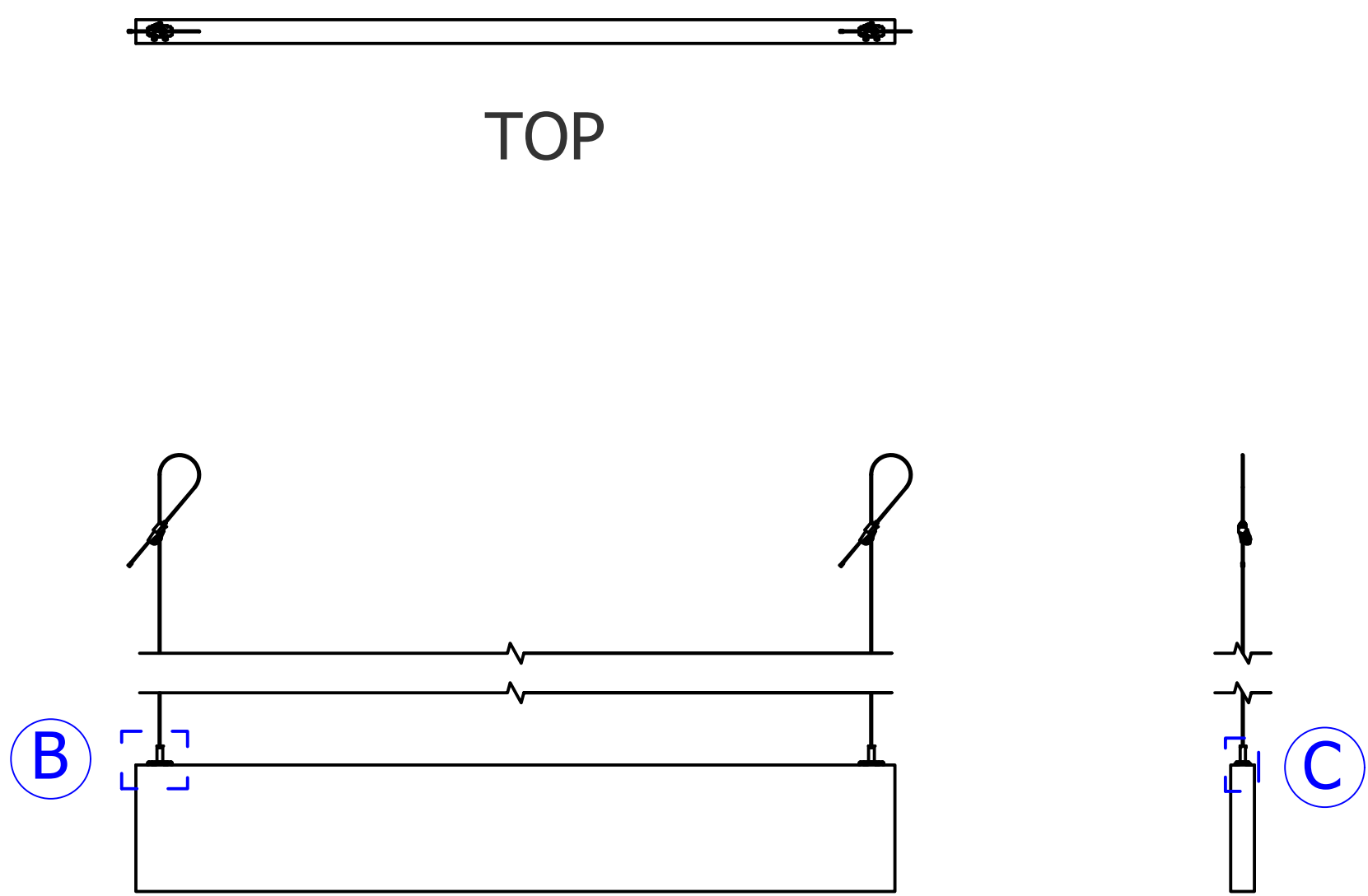
Instructional Videos



Page 5
Revision A
1/20/2023



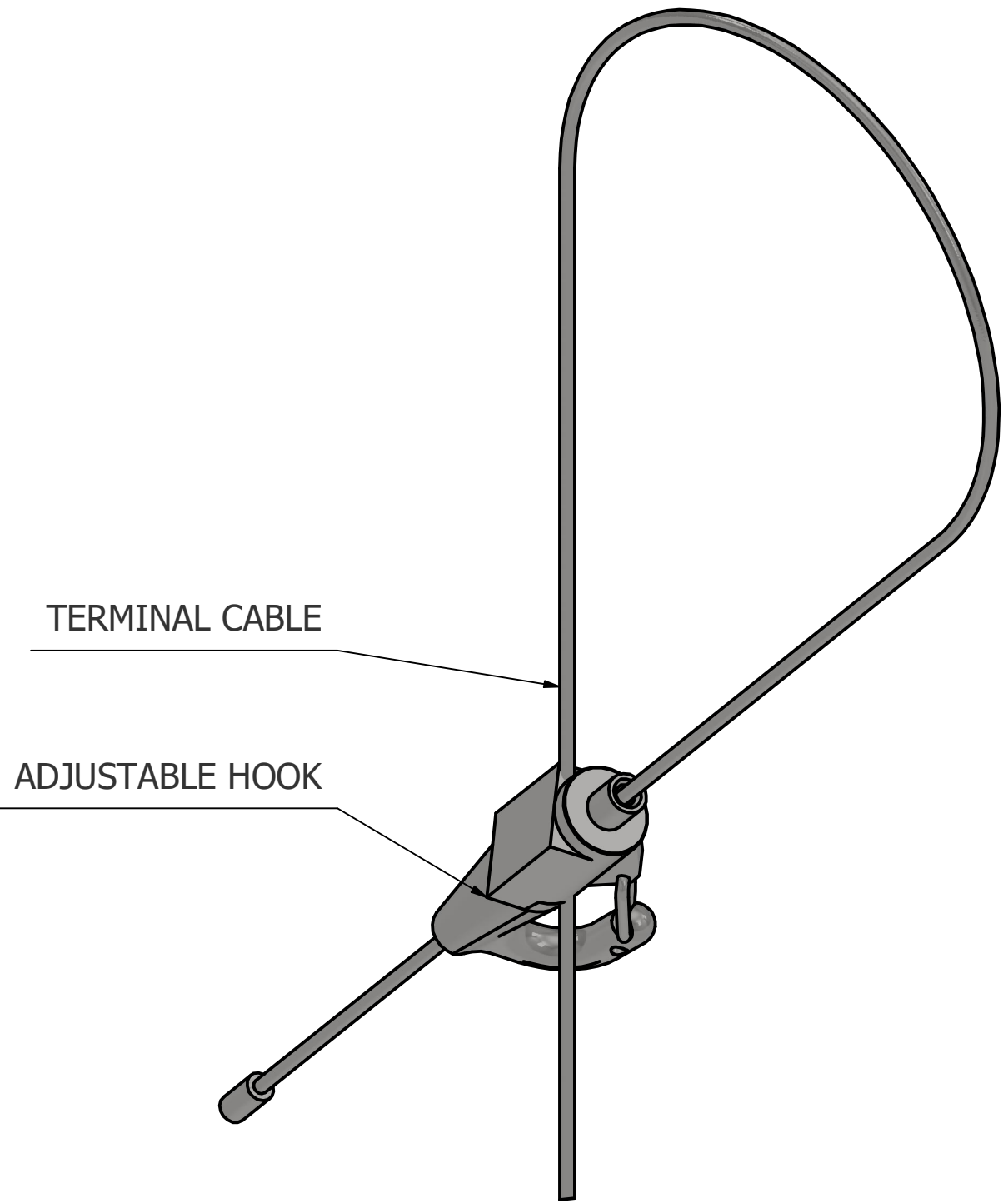
ISO



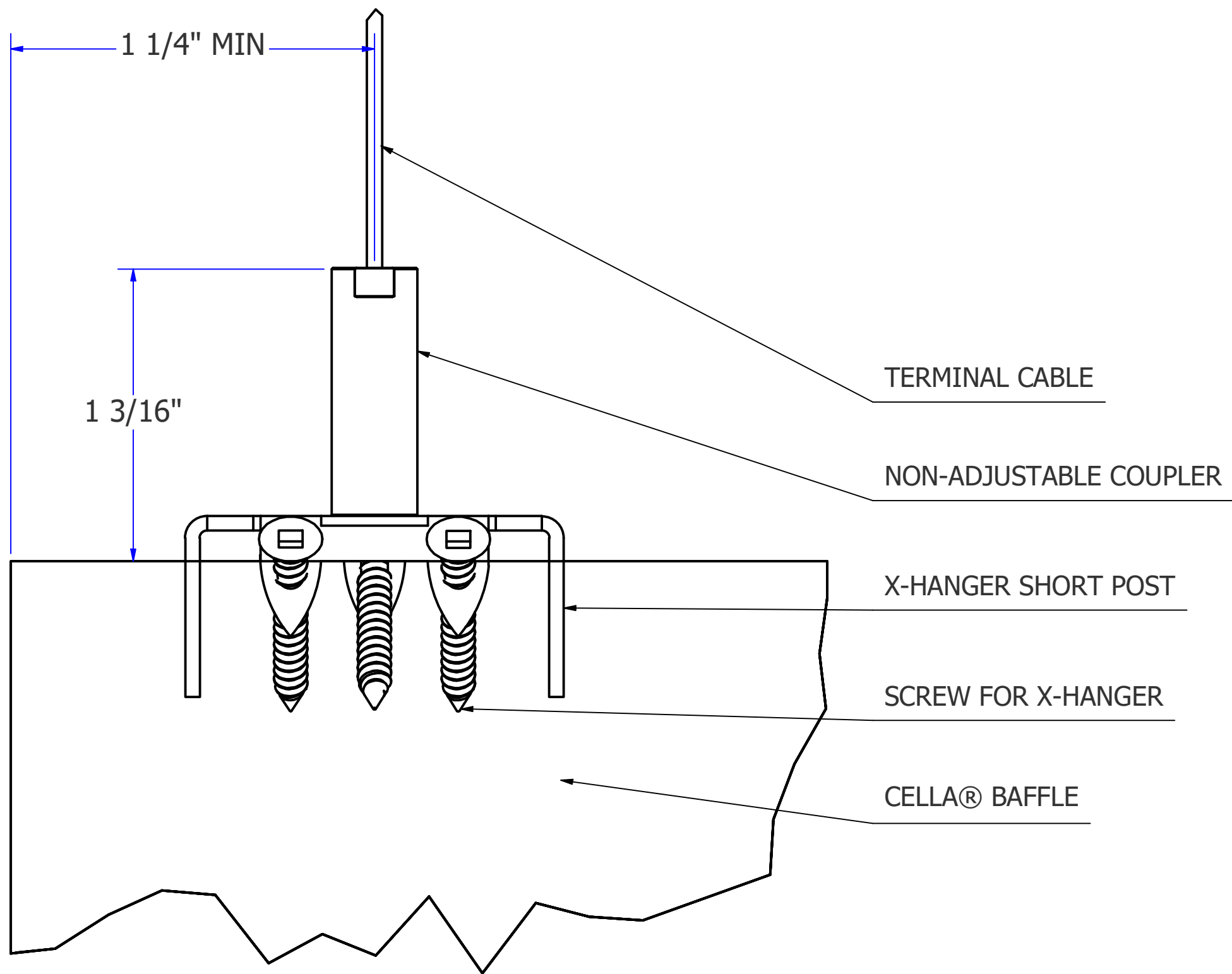
TOP

SIDE

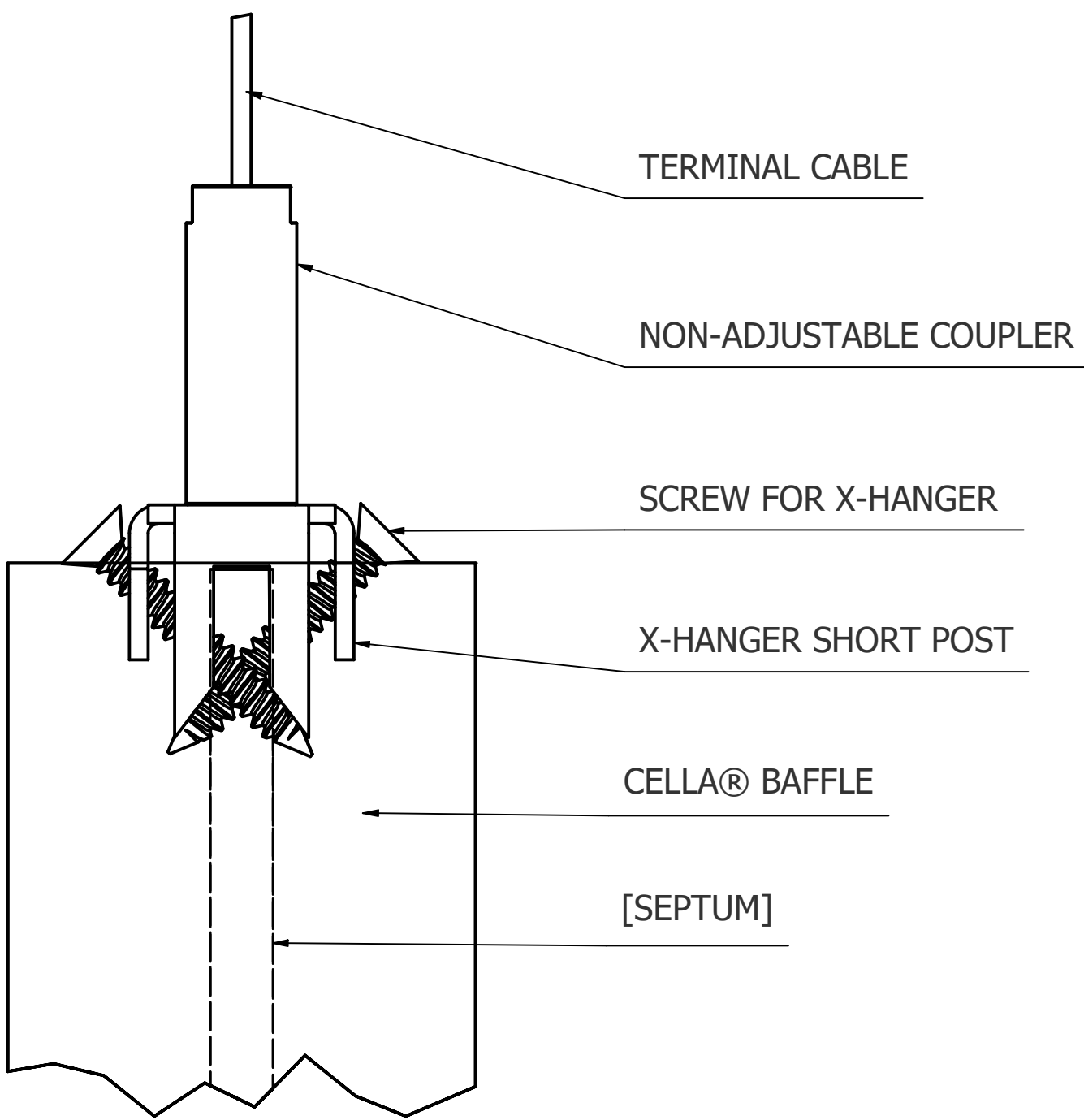
END



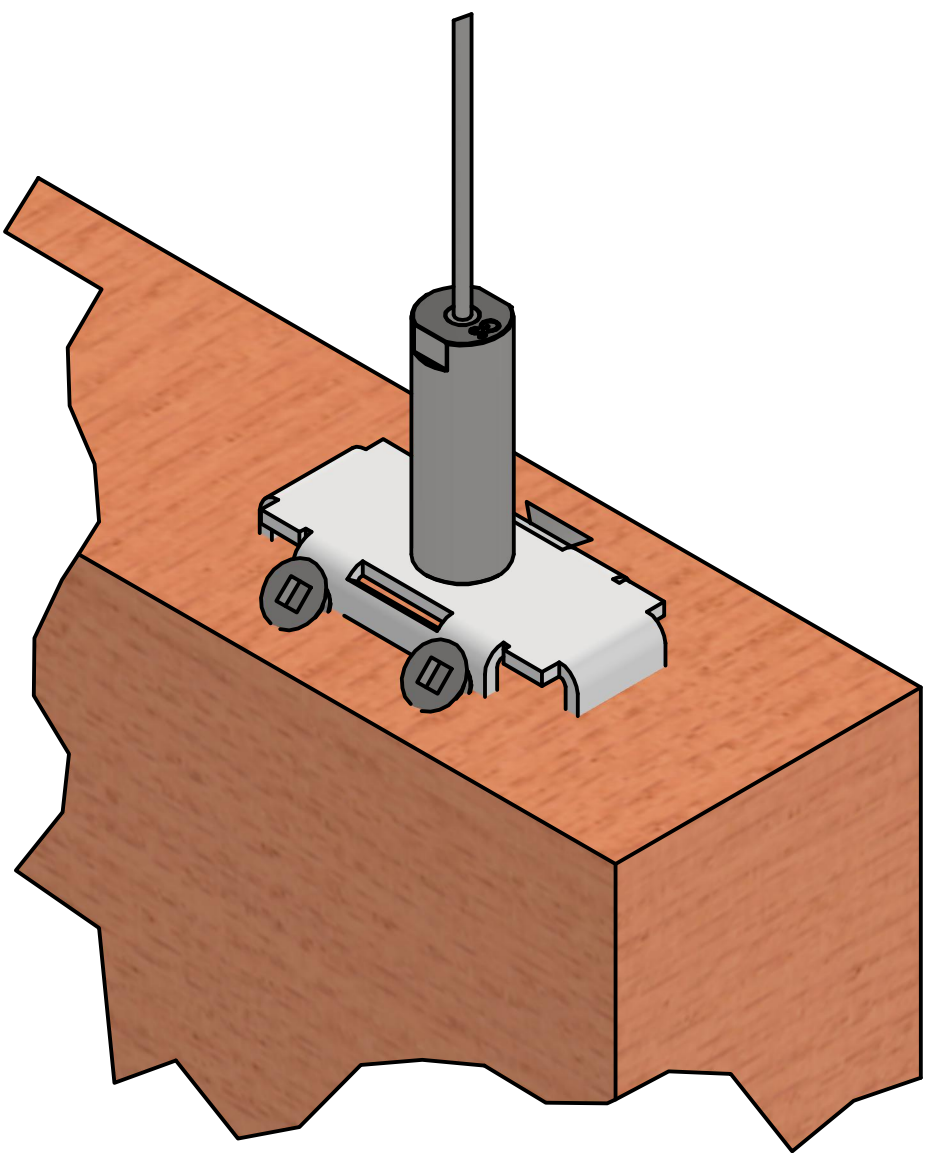
A ISO DETAIL - ADJ. HOOK CABLE ASSEMBLY



B SIDE DETAIL - NON-ADJ. COUPLER ASSEMBLY



C END DETAIL - NON-ADJ. COUPLER ASSEMBLY



D ISO DETAIL - NON-ADJ. COUPLER ASSEMBLY

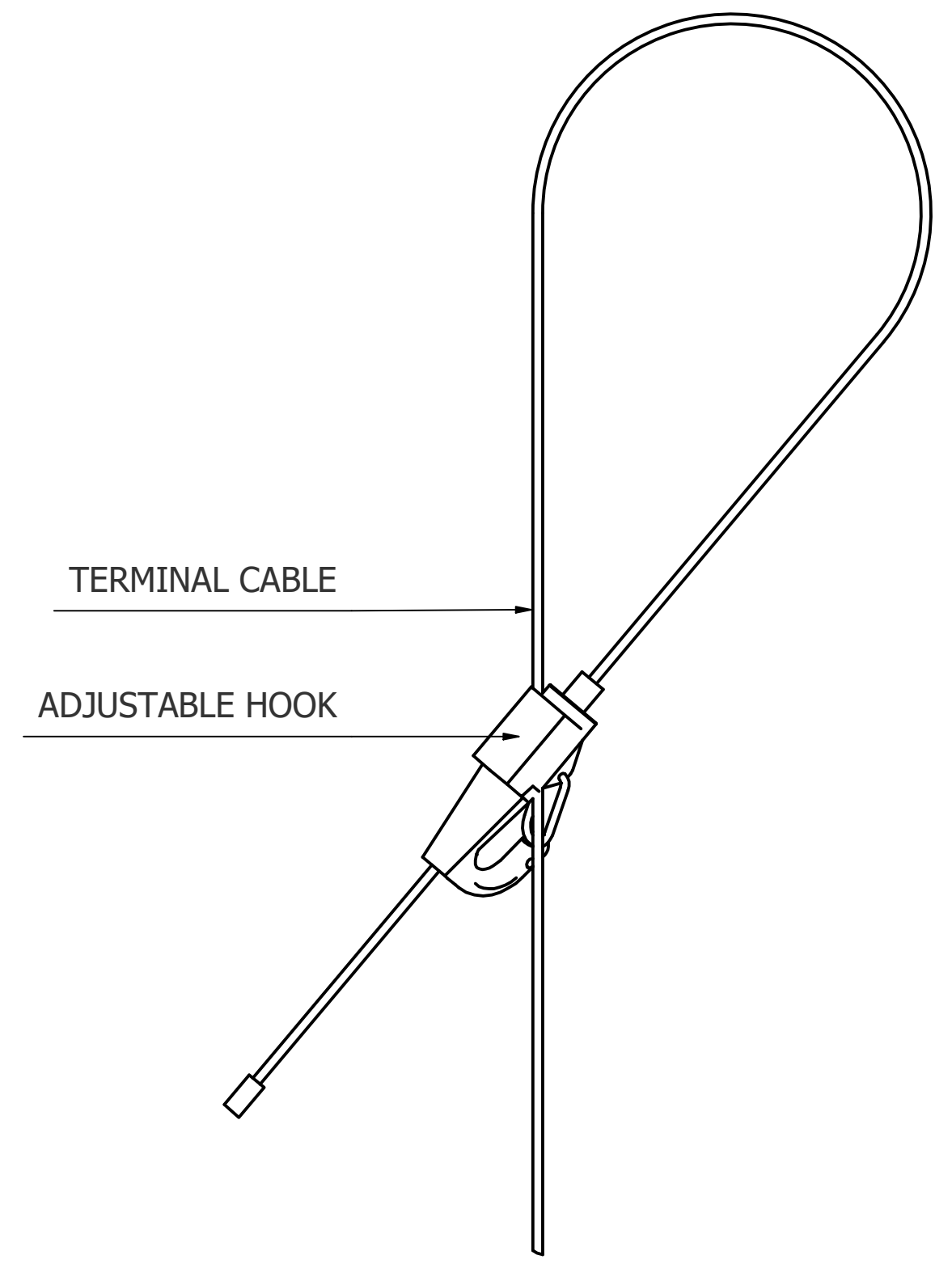
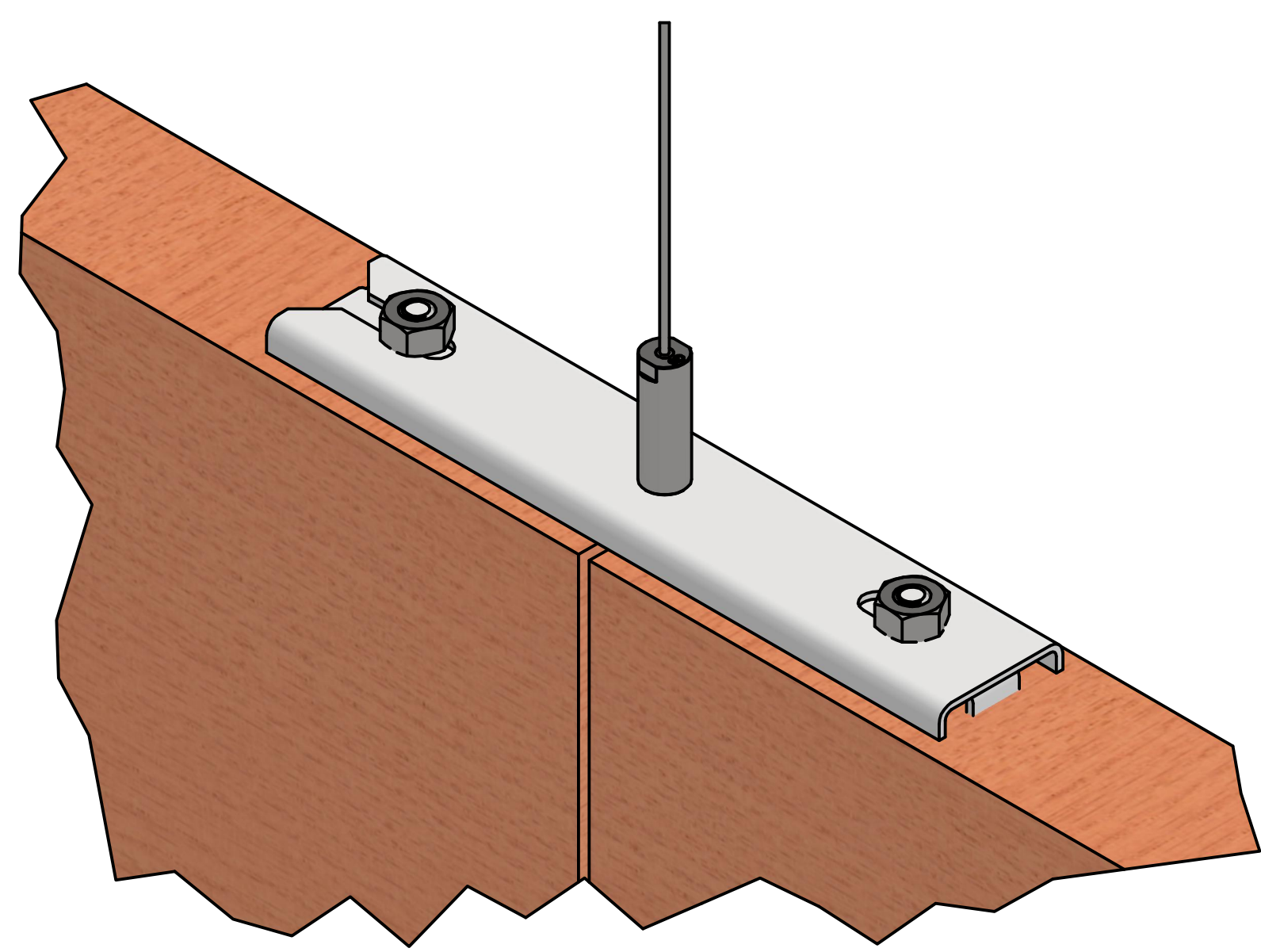
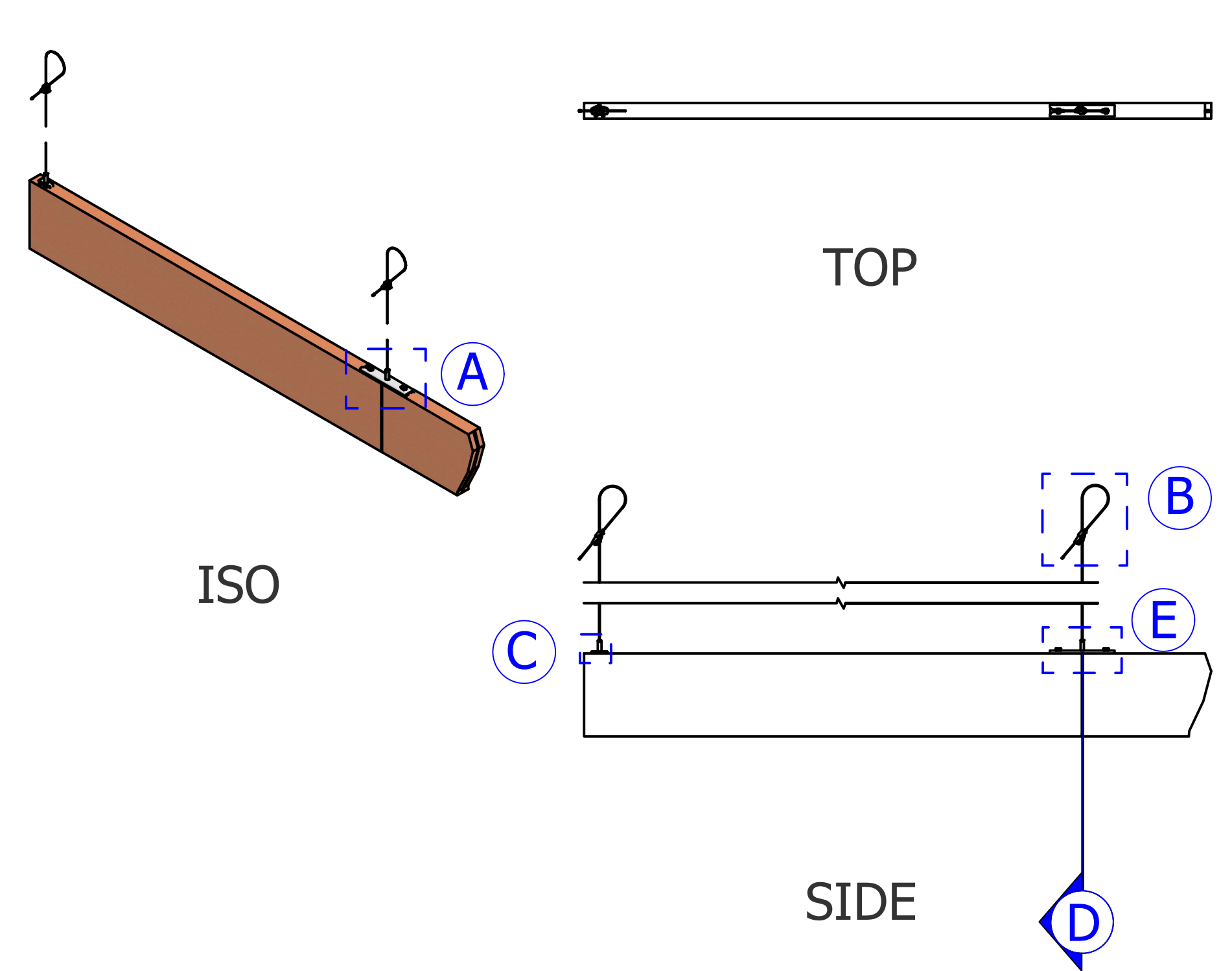
Suspended Baffle in Series - Adjust at Ceiling



These drawings have been created for illustrative purposes. The depiction of materials are not to be used as a submittal for that product.

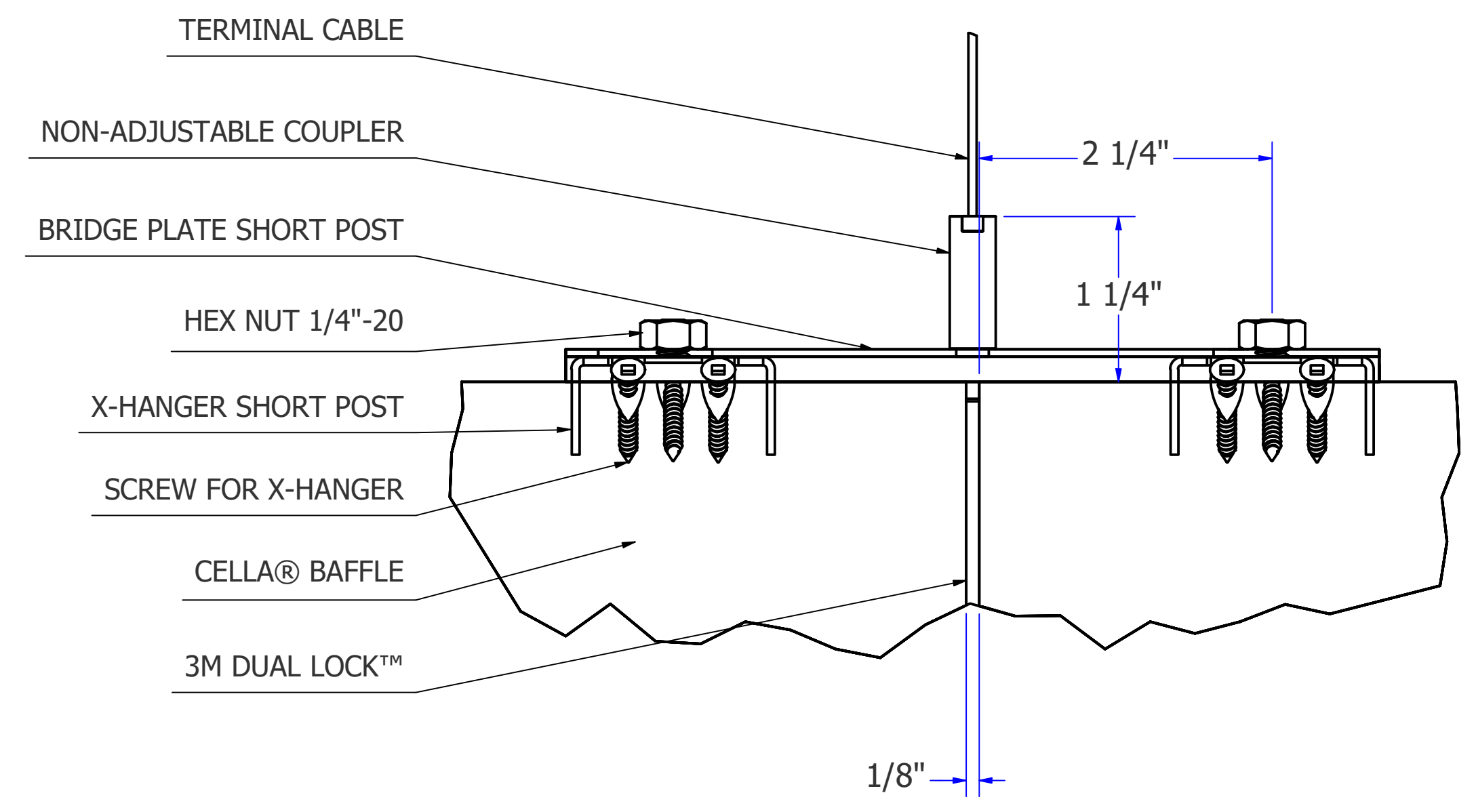
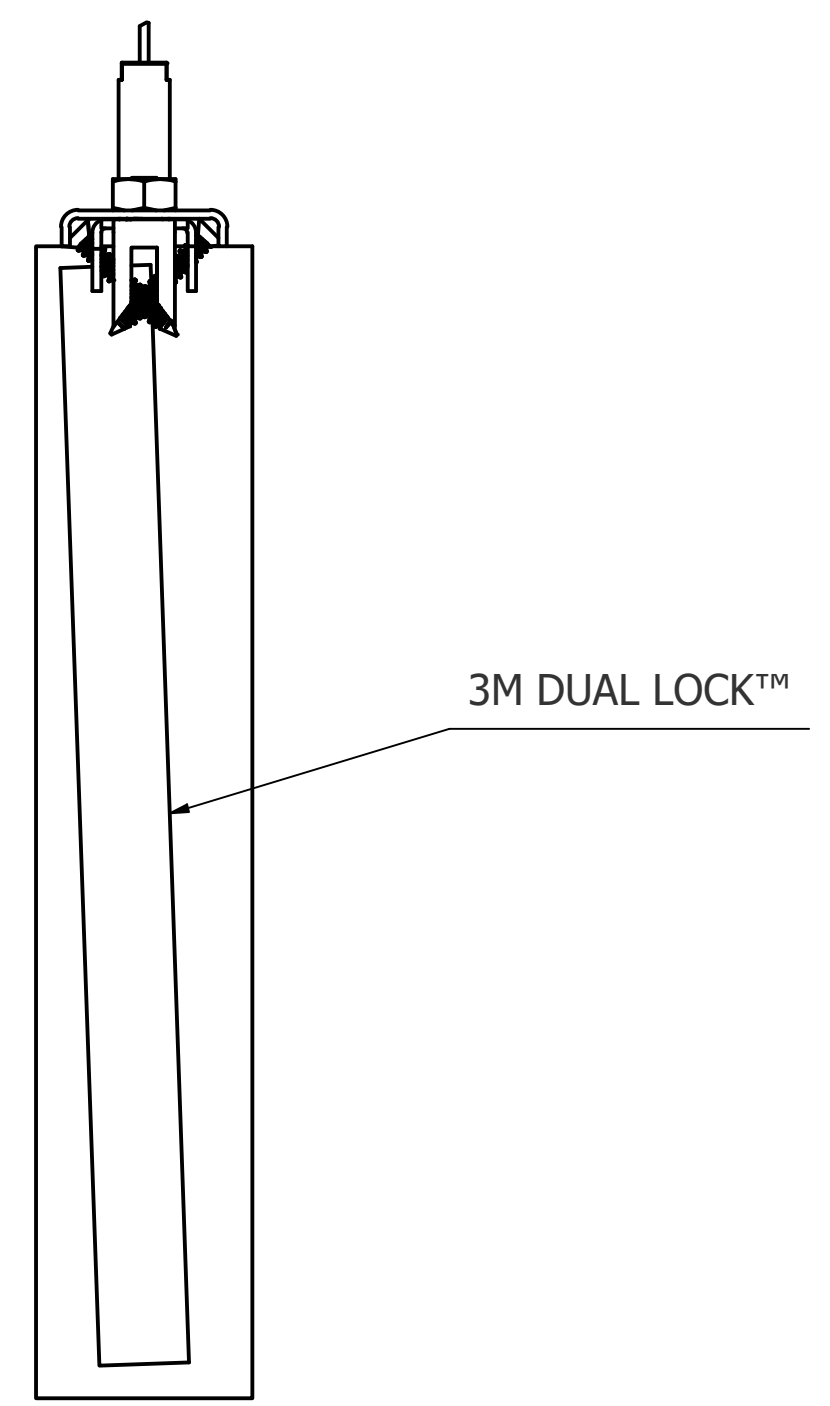
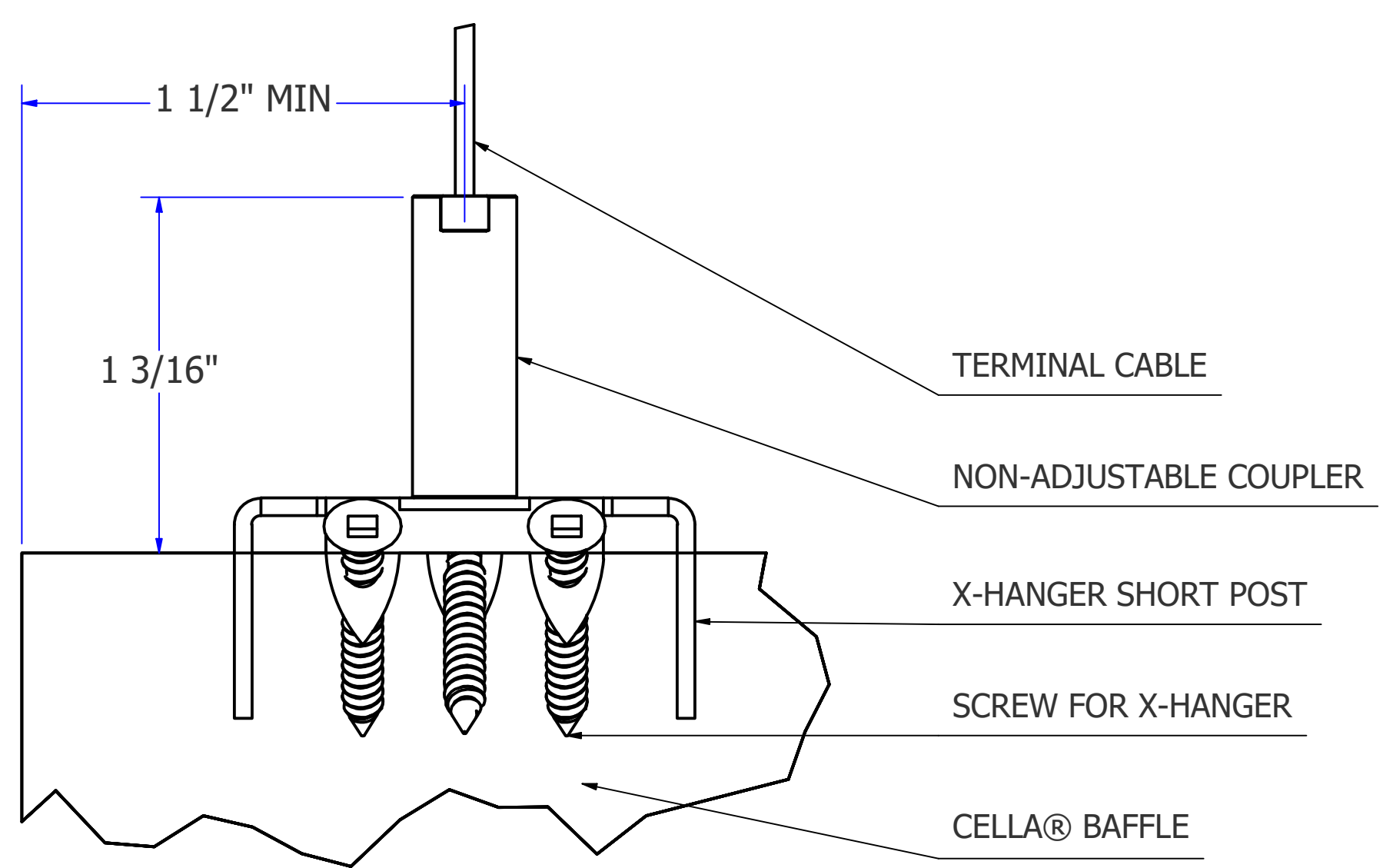
SCALE BASED ON 24" x 36" SHEET SIZE.

SUPPLIED BY NAVY ISLAND
3M DUAL LOCK™
ADJUSTABLE HOOK
BRIDGE PLATE SHORT POST
CELLA® BAFFLE
HEX NUT 1/4"-20
NON-ADJUSTABLE COUPLER
SCREW FOR X-HANGER
TERMINAL CABLE
X-HANGER SHORT POST



A ISO DETAIL - BRIDGE PLATE ASSEMBLY

B ISO DETAIL - ADJ. HOOK CABLE ASSEMBLY



C SIDE DETAIL - NON-ADJ. COUPLER ASSEMBLY

D END SECTION - 3M DUAL LOCK™ ASSEMBLY

E SIDE DETAIL - BRIDGE PLATE ASSEMBLY

Instructional Videos

