

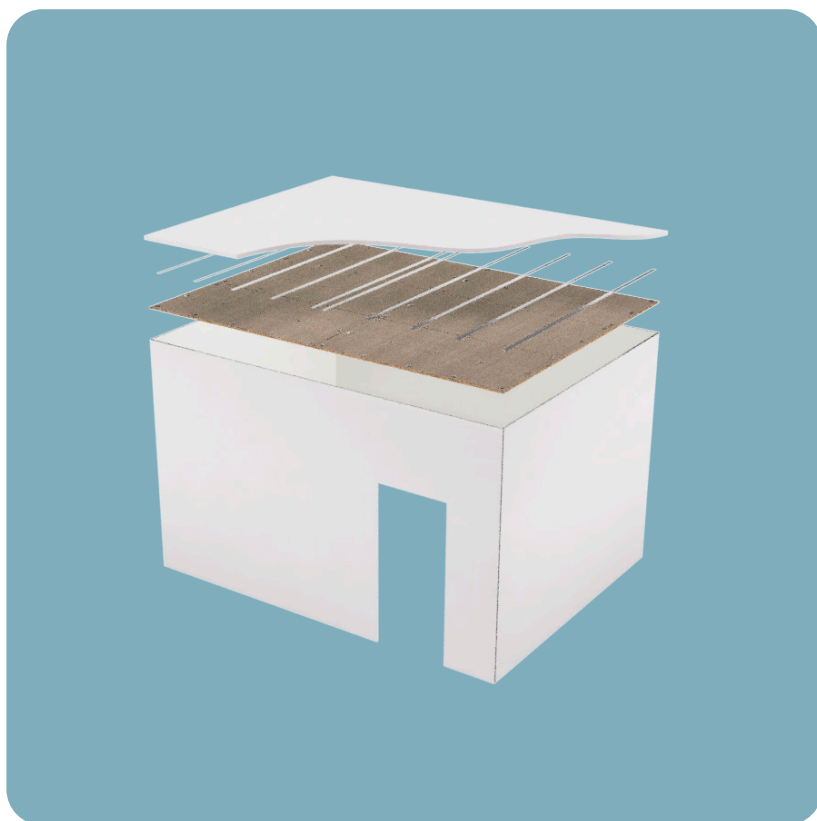
ALTA™

ACOUSTIC CEILING PANELS

CEILING Z-CLIP

DIRECT CEILING MOUNT

INSTALLATION INSTRUCTIONS



featuring

SOUNDPLY®
ACOUSTIC PRODUCTS

developed and manufactured by
NAVY ISLAND

www.soundply.com • sales@navyisland.com
275 Marie Ave. E, St. Paul, MN 55118 • (651) 451-4454

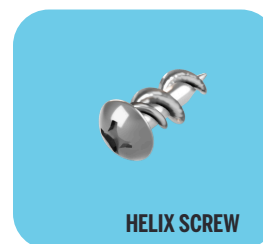
SUPPLIED HARDWARE



Z-BAR 5/8"



CUSTOM Z-CLIP 5/8"



HELIX SCREW

REQUIRED TOOLS & HARDWARE



TAPE MEASURE



MARKER



SCREW GUN



TORQUE SCREWDRIVER

BEFORE BEGINNING INSTALLATION, **OPEN AND INSPECT ALL PACKAGES** TO ENSURE ALL PARTS LISTED ON THE PACKING LIST ARE INCLUDED AND UNDamAGED.

IF ANY ITEMS ARE MISSING OR DAMAGED, CONTACT NAVY ISLAND AT (651) 451-4454.

Panel Preparation

If panels are sequence matched, location label can be found on the back of the panel. Sequenced panels **must** be installed according to the shop drawings. If at any point the shop drawings differ from these instructions, follow the shop drawings. If you cannot locate them, contact Navy Island for a copy before attempting to install.

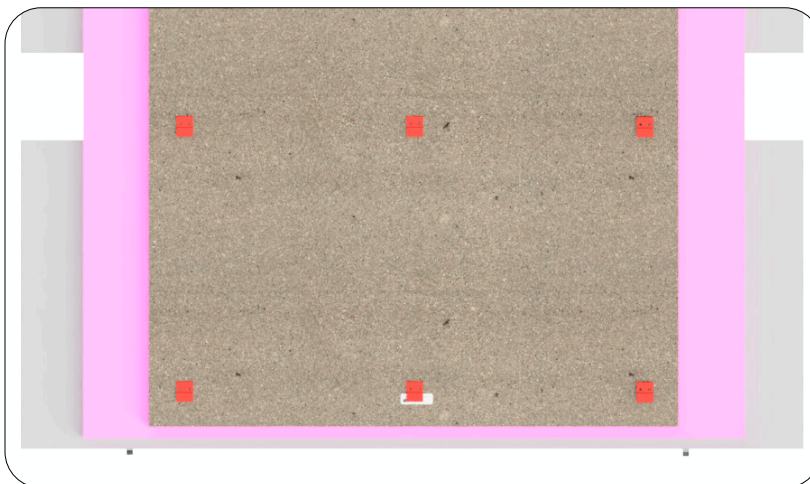
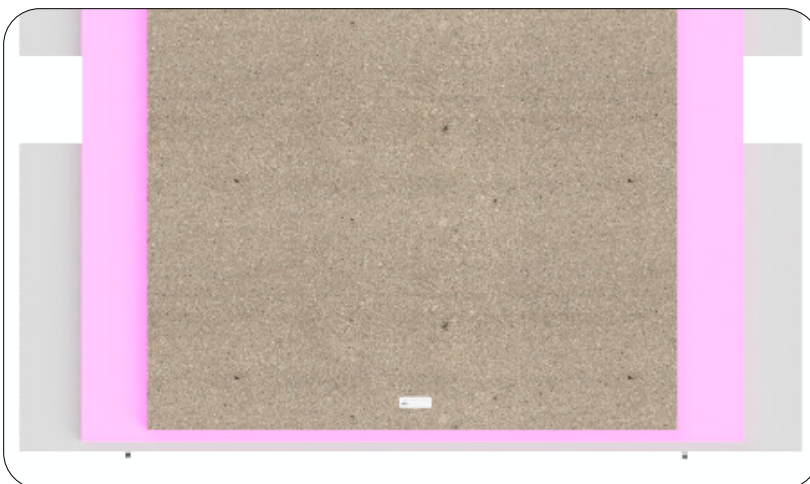
Before starting installation, ensure all wet work such as taping, painting, etc. is complete.

Lay the panel face down on a soft surface and find the panel label. Orient the panel per the shop drawings to ensure correct grain direction when installed.

For edgebanding and field modifications, please see install instructions: “SoundPly Cutting & Edgebanding Instructions”.

On panels larger than 16" wide, place Z-Clips 3" OC from each edge of the panel, a max of 24" between vertical clips and a max of 24" between horizontal clips.

On panels less than 16" wide
Z-Clips must be 3" OC from each
edge of the panel, or if using Z-Bar
cut each Z-Bar 2" shorter than
panel width.

[illegible]

INSTALLATION INSTRUCTIONS

ALTA CEILING PANELS Z-CLIP

Using a low speed and the lowest torque setting, screw in each Z-Clip using supplied anchor screws.

3

*To ensure that the screws are not over tightened, use a torque limiting screw driver set to no more than **6 inch-pounds**.*

!

Ceiling Preparation

When hanging Z-Bars, the Z-Bar should correspond with the spacing of the Z-Clips.

Anchor points on a single Z-Bar should be no more than 16" apart.

4

Panel Installation

Once the Z-Bar and Z-Clips are installed, lift panels so that the Z-Clips clear their corresponding Z-Bar. Gently press the panel into the ceiling and slide until Z-Clips are resting in Z-Bars making sure Z-Clips are engaged.

Every panel must have a stop screw or a twist clip to prevent panel from sliding off the Z-Bar.

5

!

